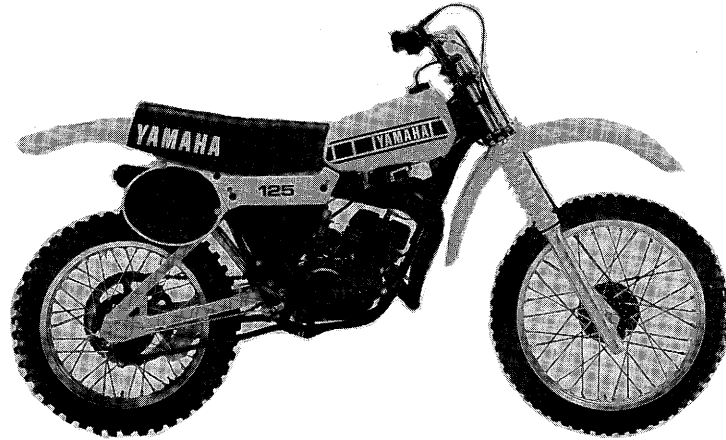


YAMAHA

PARTS LIST

MODEL YZ125F

(MODEL CODE 2X3)



FOREWORD

This Parts List is related to the parts in use for the Yamaha YZ125F. When You are ordering replacement parts for the YZ125F, refer to this Parts List and quote both part numbers and part names correctly.

1. Modifications or additions which have been made after issue of the Parts List will be announced in the Yamaha Parts News.

It is advisable that according to the Yamaha Parts News you make necessary corrections to the Parts List on hand to keep it up-to-date.

2. Abbreviations

The following abbreviations are used in this Parts List.

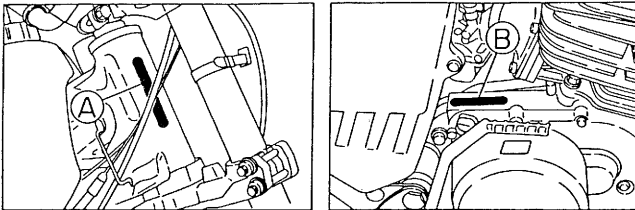
- U.R. Use size (thickness) and/or number as required.
- U.N. Use as many as you need.
- F# Frame No. (Applicable machine No.)

3. Parts, which are to be supplied in the form of assemblies, are listed with an indention of one letter's space, and a dot (.) is put against the name of each part.

EXAMPLE CARBURETOR ASS'Y
 . JET, pilot
 . NOZZLE, main

4. Initial Serial No. and Color Code

(A) Frame Serial No.	2X3-000101 and following
(B) Engine Serial No.	2X3-000101 and following



Color Code	Color Name
33	Yamaha Black
91	Uni-Chrome Plated
93	Chrome Plated
98	Low Gloss Black
R4	Heat Proof Black

CONTENTS

ENGINE

Fig. 1	Crankcase · Cylinder	1
Fig. 2	Crankcase Cover	2
Fig. 3	Crank · Piston	3
Fig. 4	Clutch	4
Fig. 5	Transmission	5
Fig. 6	Shifter 1	7
Fig. 7	Shifter 2	8
Fig. 8	Kick Starter	9
Fig. 9	Intake	10
Fig. 10	Carburetor	11
Fig. 11	Exhaust	13
Fig. 12	C.D.I. Magneto	14

CHASSIS

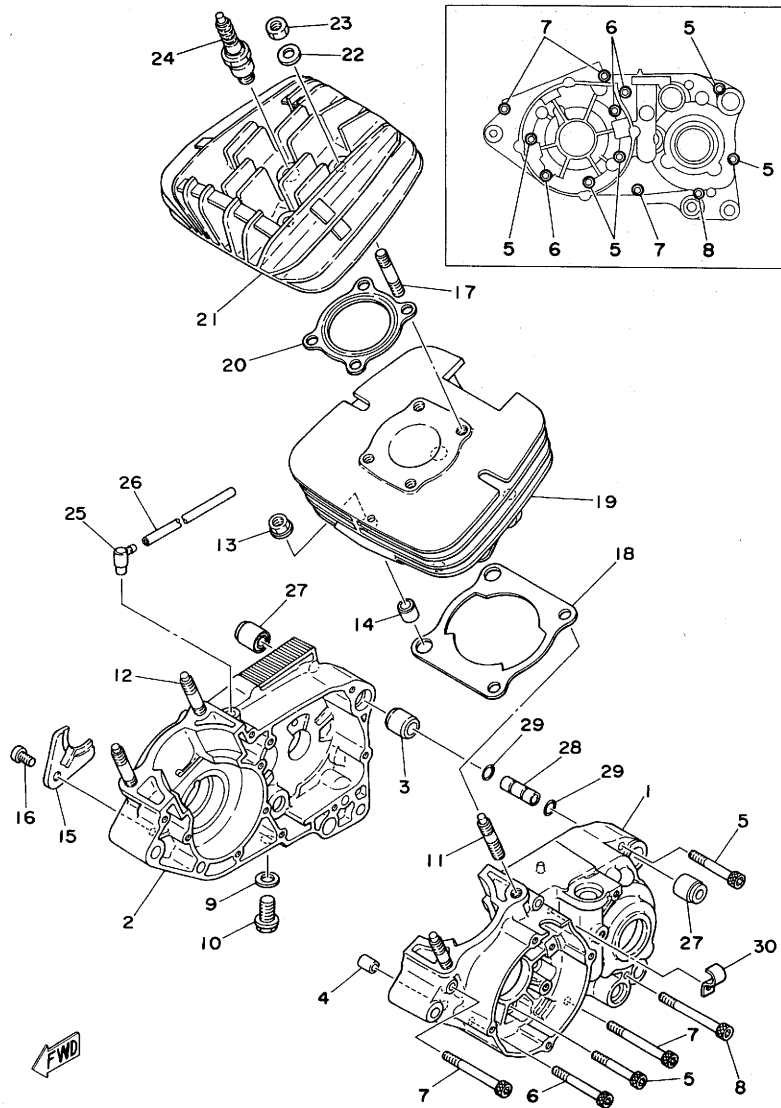
Fig. 13	Frame · Side Cover	15
Fig. 14	Rear Arm	16
Fig. 15	Rear Cushion	18
Fig. 16	Stand · Footrest · Brake Pedal	19
Fig. 17	Front Fender · Rear Fender	20
Fig. 18	Front Fork	21
Fig. 19	Steering	23
Fig. 20	Handle · Wire	24
Fig. 21	Fuel Tank	26
Fig. 22	Seat	27
Fig. 23	Front Wheel	28
Fig. 24	Rear Wheel	29
Fig. 25	Electrical	31

REPAIR KIT

Fig. 26	Repair Kit	34
---------	------------	----

NUMERICAL INDEX

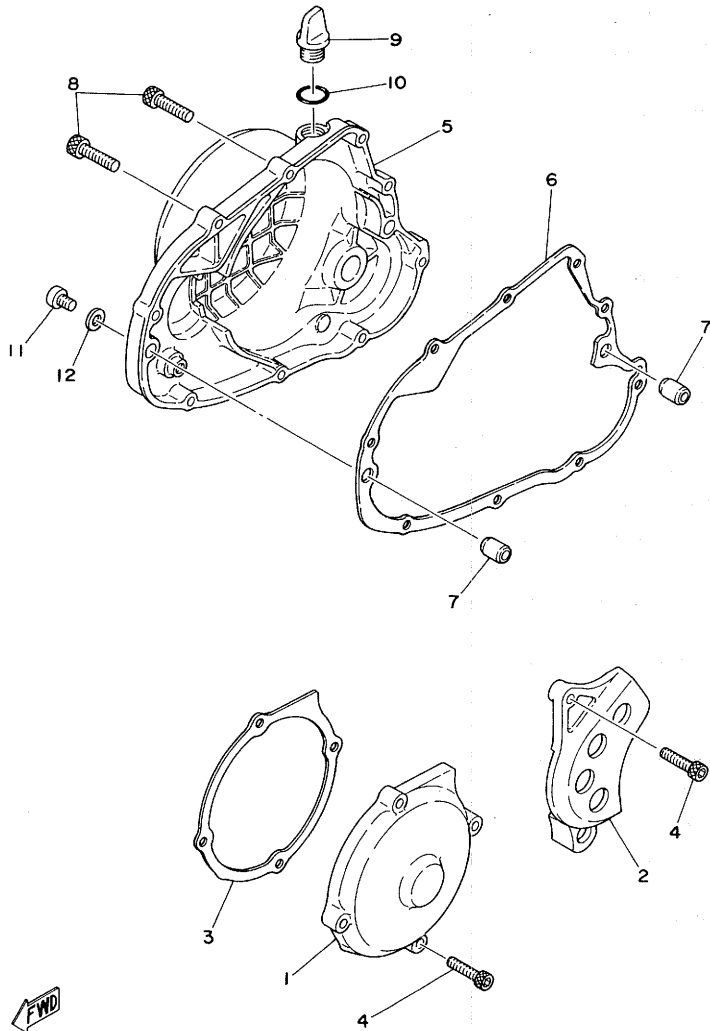
Fig. 1 CRANKCASE · CYLINDER



Ref.No.	Part No.	Description	Qty	Remarks
1- 1	2W5-15111-00	CASE, crank left	1	
2	1W1-15121-01	CASE, crank right	1	
3	91810-19020	PIN, dowel (16.5-20-20)	1	
4	91830-21014	PIN, dowel (6.4-10-14)	1	
5	91316-06050	BOLT, hexagon socket head	5	
6	91316-06060	BOLT, hexagon socket head	3	
7	91316-06070	BOLT, hexagon socket head	3	
8	91316-06075	BOLT, hexagon socket head	1	
9	90430-12038	GASKET (132-15353-00)	1	
10	90340-12005	PLUG, straight screw (132-15351-00)	1	
11	90116-10278	BOLT, stud	2	
12	90116-10279	BOLT, stud	2	
13	90179-10204	NUT	4	
14	91810-16016	PIN, dowel (10.5-14-16)	2	
15	304-15128-00	HOLDER, right	1	
16	92501-08010	SCREW, panhead	1	
17	90116-08262	BOLT, stud	4	
18	1W1-11351-00	GASKET, cylinder	1	
19	2X3-11311-00	CYLINDER	1	
20	2X3-11181-00	GASKET, cylinder head	1	
21	2X3-11111-00	HEAD, cylinder	1	
22	812-11175-00	WASHER, plate	4	
23	95301-08600	NUT, hexagon	4	
24	*	PLUG, spark (N-59G)	1	CHAMPION
25	2N4-15371-00	BREATHER	1	
26	90445-07340	HOSE (4.2-310)	1	
27	328-15316-00	DAMPER, engine mount	2	
28	401-15317-00	SPACER, engine mount	1	
29	93210-11073	O-RING (2.4-10.8)	2	
30	90462-06009	CLAMP	1	

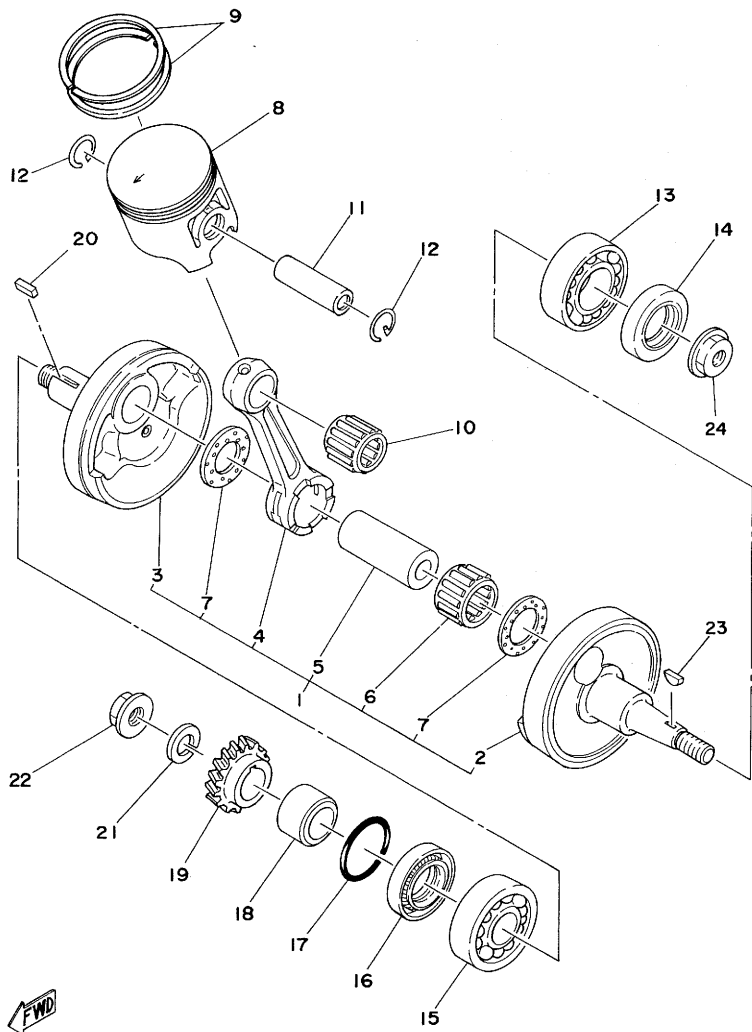
*; The parts marked with * in the part No. column are not supplied with by Yamaha, those have to be found locally.

Fig. 2 CRANKCASE COVER



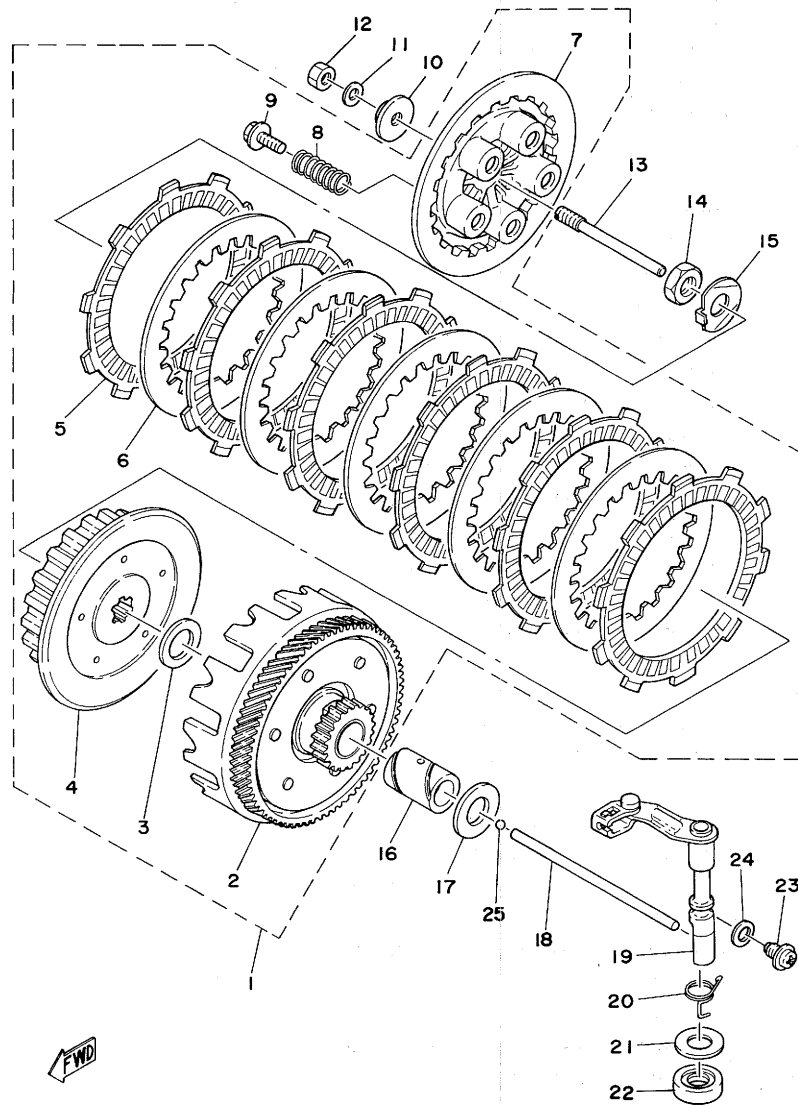
Ref.No.	Part No.	Description	Q'ty	Remarks
2- 1	2W5-15411-00	COVER, crankcase left 1	1	
2	2W5-15421-00	COVER, crankcase left 2	1	
3	2W5-15455-00	GASKET, crankcase cover left	1	
4	91316-06030	BOLT, hexagon socket head	5	
5	1W1-15431-00	COVER, crankcase right	1	
6	1W1-15451-00	GASKET, crankcase cover right	1	
7	91830-21014	PIN, dowel (6.4-10-14)	2	
8	91316-06030	BOLT, hexagon socket head	9	
9	1G8-15362-00	PLUG, oil level	1	
10	93210-14104	O-RING (2.4-13.8)	1	
11	92506-06008	SCREW, panhead	1	
12	90430-06016	GASKET (838-15384-00)	1	

Fig. 3 CRANK · PISTON



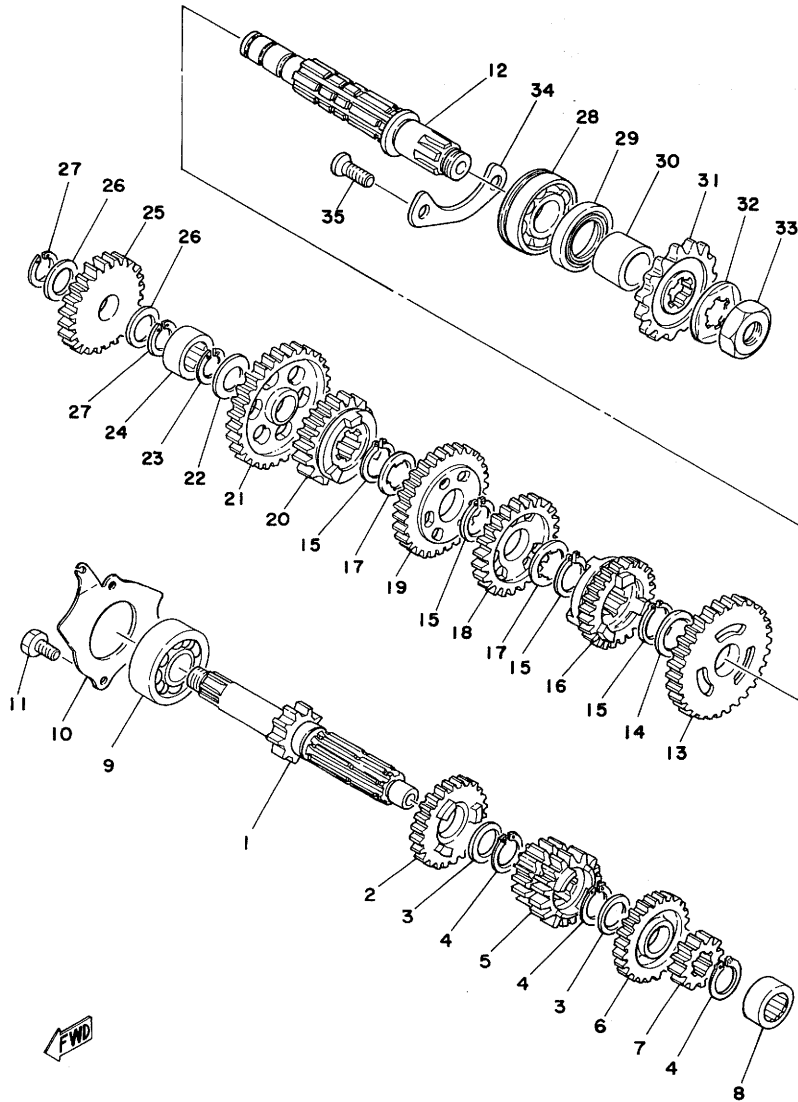
Ref.No.	Part No.	Description	Q'ty	Remarks
3- 1	2W5-11400-00	CRANK ASS'Y	1	
2	2W5-11412-00	. CRANK, left	1	
3	1W1-11422-01	. CRANK, right	1	
4	1G8-11651-00	. ROD, connecting	1	
5	2K5-11681-00	. PIN, crank	1	
6	93310-422G3	. BEARING, con-rod big end	1	
7	90209-22071	. WASHER (164-11685-00)	2	
8	2X3-11631-01-97	PISTON (55.97mm STD)	} U.R. 1	
	2X3-11631-01-98	PISTON (55.98mm STD)		
	2X3-11635-01	PISTON (56.25mm 1st O.S)	1	Alternate Parts
	2X3-11636-01	PISTON (56.50mm 2nd O.S)	1	Alternate Parts
	2X3-11637-01	PISTON (56.75mm 3rd O.S)	1	Alternate Parts
	2X3-11638-01	PISTON (57.00mm 4th O.S)	1	Alternate Parts
9	2X3-11601-00	PISTON RING SET (STD)	1s	
	2X3-11601-10	PISTON RING SET (1st O.S)	1s	Alternate Parts
	2X3-11601-20	PISTON RING SET (2nd O.S)	1s	Alternate Parts
	2X3-11601-30	PISTON RING SET (3rd O.S)	1s	Alternate Parts
	2X3-11601-40	PISTON RING SET (4th O.S)	1s	Alternate Parts
10	93310-216A3	BEARING, con-rod small end	1	
11	137-11633-00	PIN, piston	1	
12	93450-17025	CIRCLIP	2	
13	93306-20529	BEARING (B6205)	1	
14	93102-25144	OIL SEAL (SD-25-40-8)	1	
15	93306-30406	BEARING (B6304)	1	
16	93103-28100	OIL SEAL (SW-28-40-8)	1	
17	93210-18023	O-RING (1.2-17.6)	1	
18	90387-20488	COLLAR, distance (20-28-18.5)	1	
19	1W1-16111-00	GEAR, primary drive (22T)	1	
20	90282-05005	KEY, straight (353-11546-00)	1	
21	90204-12007	WASHER, spring	1	
22	90179-12244	NUT	1	
23	90280-03017	KEY, woodruff (146-11545-00)	1	
24	90179-10257	NUT	1	

Fig. 4 CLUTCH



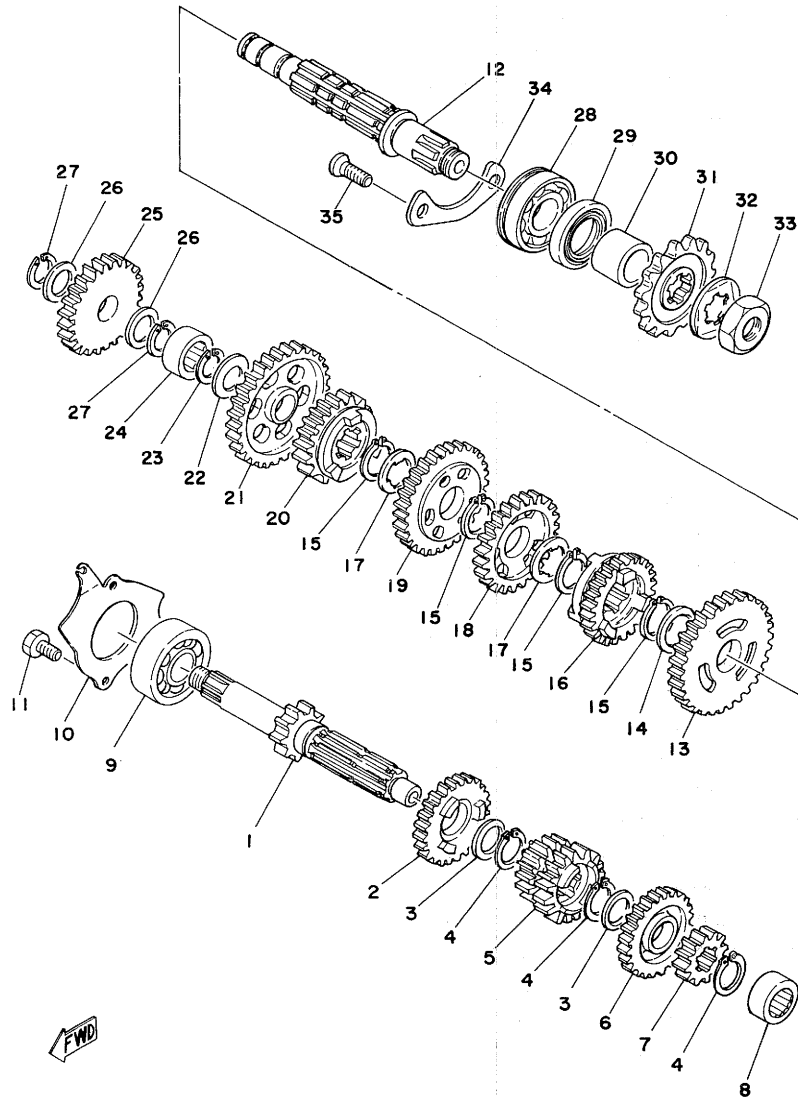
Ref.No.	Part No.	Description	Q'ty	Remarks
4- 1	1W1-16301-01	CLUTCH ASS'Y	1	
2	1W1-16150-01	. PRIMARY DRIVEN GEAR COMP. (71T)	1	
3	90201-17550	. WASHER, plate	1	
4	1G8-16371-00	. BOSS, clutch	1	
5	537-16321-00	. PLATE, friction	6	
6	137-16325-70	. PLATE, clutch 2	5	
7	1W1-16351-00	. PLATE, pressure	1	
8	90501-20361	. SPRING, compression	5	
9	90159-05011	. SCREW, with washer	5	
10	1W1-16358-00	PLATE, push	1	
11	92901-06200	WASHER, plain	1	
12	95301-06600	NUT, hexagon	1	
13	1W1-16356-00	ROD, push 1	1	
14	90170-14171	NUT, hexagon	1	
15	90215-14144	WASHER, lock	1	
16	90560-17147	SPACER	1	
17	90201-17550	WASHER, plate	1	
18	2X3-16357-00	ROD, push 2	1	
19	2X3-16380-00	PUSH LEVER ASS'Y	1	
20	90508-20345	SPRING, torsion	1	
21	90201-14217	WASHER, plate (150-25153-00)	1	
22	93104-14004	OIL SEAL (SO-14-25-5)	1	
23	90149-08108	SCREW	1	
24	90430-08069	GASKET (425-16387-00)	1	
25	93503-16010	BALL (3/16 inch)	1	

Fig. 5 TRANSMISSION



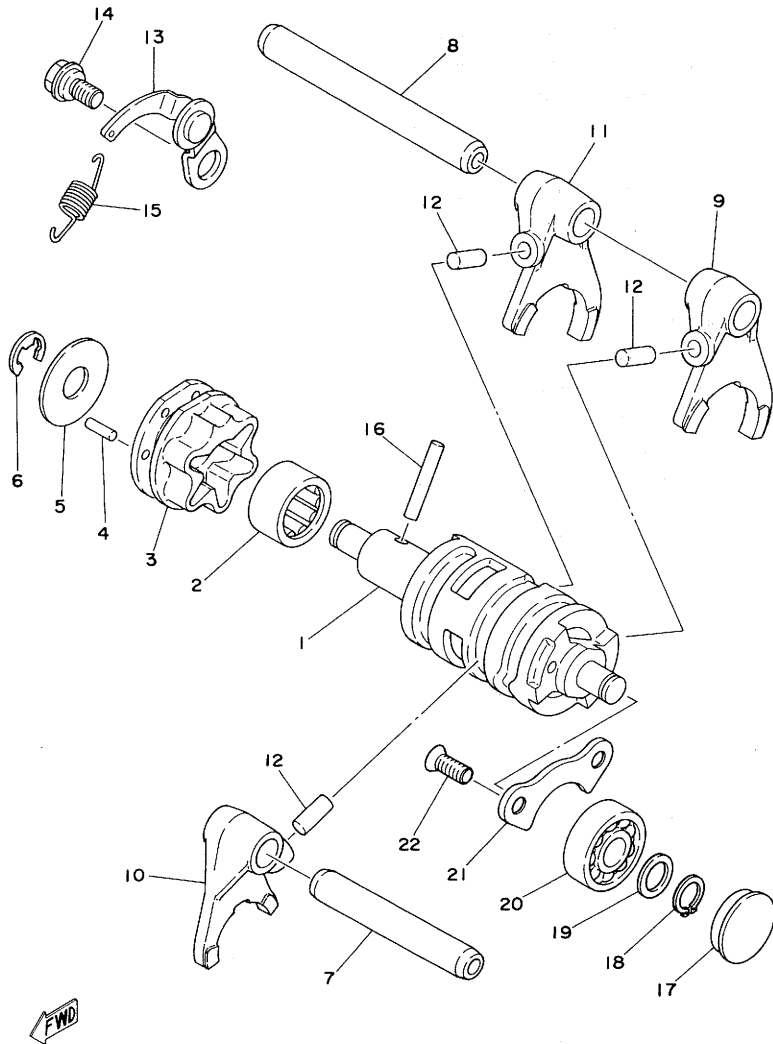
Ref.No.	Part No.	Description	Q'ty	Remarks
5- 1	1W1-17411-00	AXLE, main (13T)	1	
2	2W5-17151-00	GEAR, 5th pinion (22T)	1	
3	90201-20266	WASHER, plate (132-17216-00)	2	
4	93410-20038	CIRCLIP (S-20)	3	
5	2W5-17131-00	GEAR, 3rd/4th pinion (18T, 20T)	1	
6	2W5-17161-00	GEAR, 6th pinion (23T)	1	
7	1W1-17121-00	GEAR, 2nd pinion (16T)	1	
8	93311-41530	BEARING	1	
9	93306-30304	BEARING (B6303Z)	1	
10	1W1-17471-01	PLATE, bearing cover	1	
11	97321-06012	BOLT, hexagon	2	
12	1W1-17421-00	AXLE, drive	1	
13	2W5-17221-00	GEAR, 2nd wheel (30T)	1	
14	90201-22555	WASHER, plate	1	
15	93410-22039	CIRCLIP (S-22)	4	
16	2W5-17261-00	GEAR, 6th wheel (23T)	1	
17	90209-18135	WASHER	2	
18	2W5-17241-00	GEAR, 4th wheel (25T)	1	
19	2W6-17231-01	GEAR, 3rd wheel (27T)	1	
20	2W5-17251-00	GEAR, 5th wheel (24T)	1	
21	1W1-17211-01	GEAR, 1st wheel (32T)	1	
22	90201-15701	WASHER, thrust	1	
23	93440-15012	CIRCLIP (15φ special)	1	
24	93311-32515	BEARING	1	
25	525-15651-00	GEAR, kick idle (25T)	1	
26	137-17417-00-05	SHIM, main axle (15.5-22-0.5)	2	
27	93440-15012	CIRCLIP (15φ special)	2	
28	93306-30411	BEARING (B6304)	1	
29	93102-26042	OIL SEAL (SD-26-38-5)	1	
30	90387-20503	COLLAR (20-26-11.3)	1	
31	1G8-17461-10	SPROCKET, drive (11T)	U.R. 1	STD
	1W1-17461-20	SPROCKET, drive (12T)		
	1G8-17461-30	SPROCKET, drive (13T)		

Fig. 5 TRANSMISSION



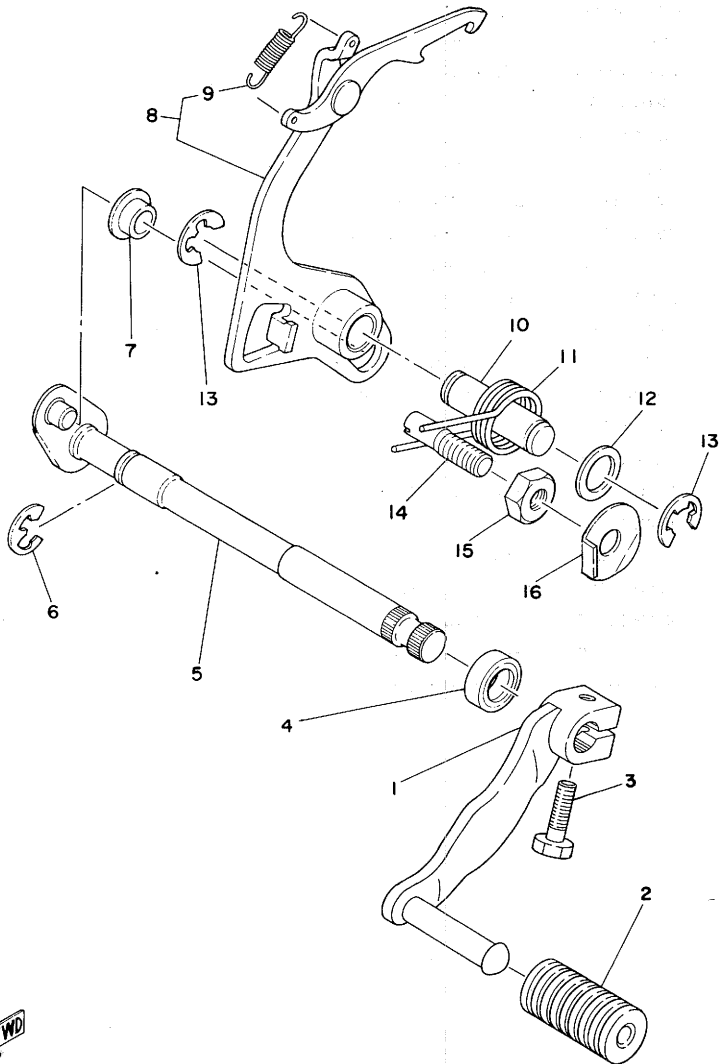
Ref.No.	Part No.	Description	Qty	Remarks
5-32	90215-16127	WASHER, lock	1	
33	90179-16226	NUT	1	
34	1W1-15381-00	PLATE, bearing cover	1	
35	92701-06012	SCREW, flathead	2	

Fig. 6 SHIFTER 1



Ref.No.	Part No.	Description	Q'ty	Remarks
6- 1	2W5-18541-00	CAM, shift	1	
2	93315-21813	BEARING	1	
3	1W1-18185-00	SEGMENT	1	
4	93604-12037	PIN, dowel (4-11.8)	6	
5	1W1-18561-00	PLATE, side	1	
6	93430-08006	CIRCLIP (E-8)	1	
7	1W1-18531-00	BAR, shift fork guide 1	1	
8	1W1-18535-00	BAR, shift fork guide 2	1	
9	2W6-18511-00	FORK, shift 1	1	
10	2W6-18512-00	FORK, shift 2	1	
11	2W6-18513-00	FORK, shift 3	1	
12	90250-06013	PIN, straight (257-18552-00)	3	
13	1W1-18140-00	STOPPER LEVER ASS'Y	1	
14	1W1-18177-00	BOLT, stopper 2	1	
15	90506-09156	SPRING, tension	1	
16	93604-30018	PIN, dowel (4-29.8)	1	
17	90338-23090	PLUG	1	
18	93410-11002	CIRCLIP	1	
19	90201-12164	WASHER, plate	1	
20	93306-20107	BEARING	1	
21	2W5-15381-00	PLATE, bearing cover	1	
22	92701-06012	SCREW, flathead	2	

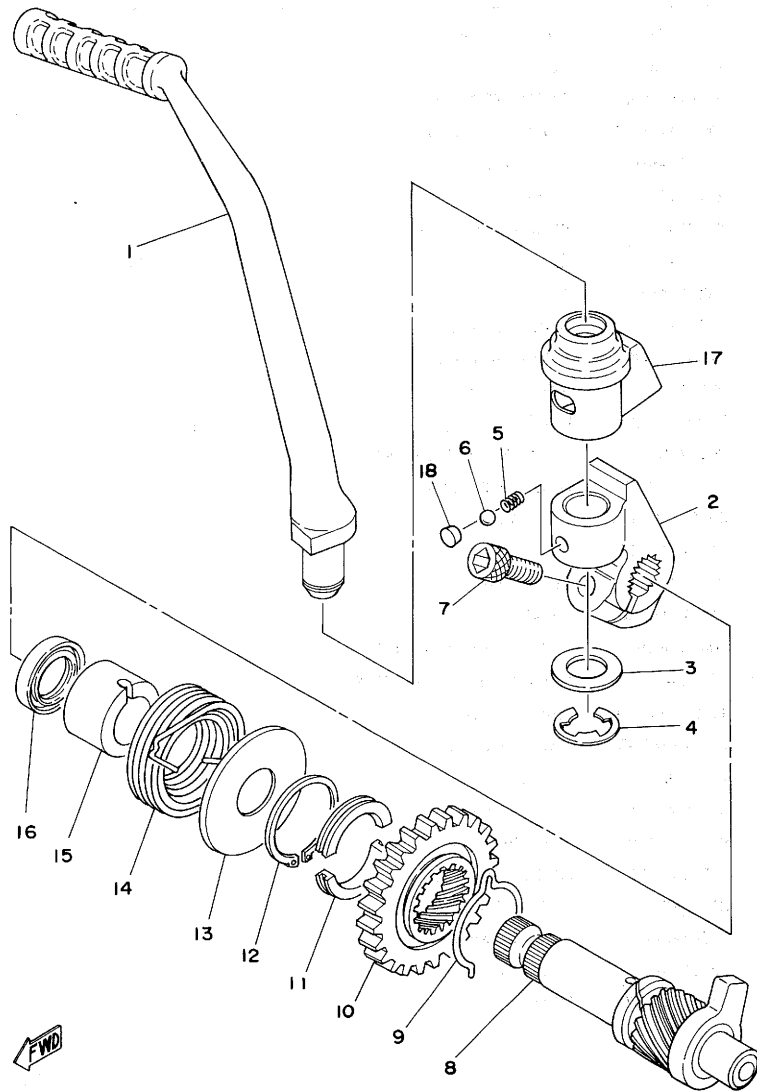
Fig. 7 SHIFTER 2



Ref.No.	Part No.	Description	Q'ty	Remarks
7- 1	2X3-18111-00-33	PEDAL, change	1	Yamaha Black
2	132-18113-01	COVER, change pedal	1	
3	97321-06020	BOLT, hexagon	1	
4	93101-12060	OIL SEAL (S-12-21-4)	1	
5	1W1-18101-02	CHANGE SHAFT ASS'Y	1	
6	93430-10016	CIRCLIP (E-10)	1	
7	401-18178-00	ROLLER, change lever	1	
8	2A6-18120-01	CHANGE LEVER ASS'Y	1	
9	90506-08155	.SPRING, tension	1	
10	1W1-18197-01	SHAFT	1	
11	90508-32349	SPRING, torsion	1	
12	102-18137-00-10	WASHER, plate	1	
13	93430-10016	CIRCLIP (E-10)	2	
14	90149-08111	SCREW	1	
15	90170-08029	NUT, hexagon (248-18134-00)	1	
16	90215-08014	WASHER, lock (248-18139-00)	1	

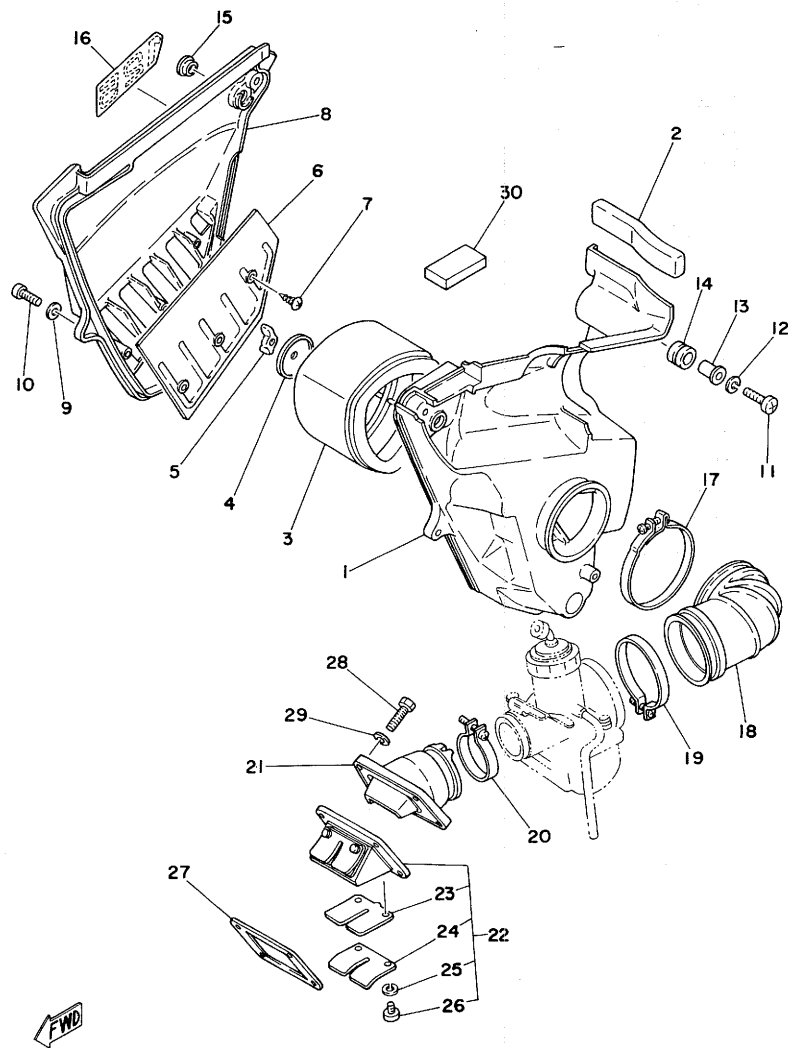


Fig. 8 KICK STARTER



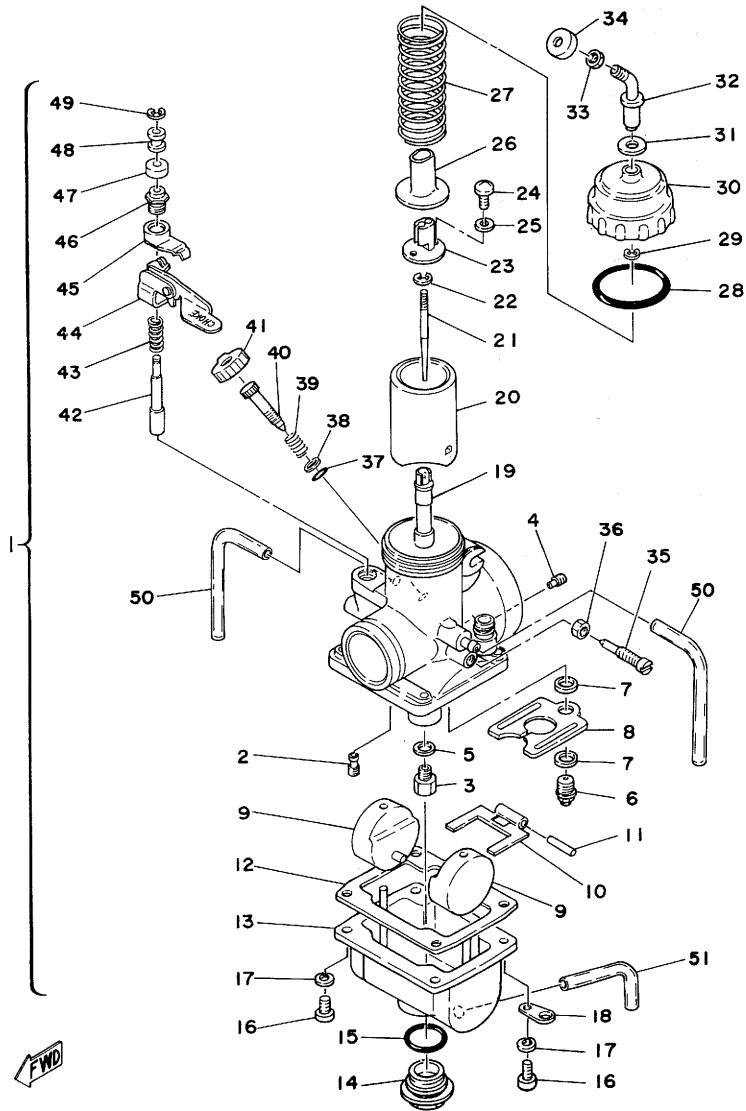
Ref.No.	Part No.	Description	Q'ty	Remarks
8- 1	1W1-15611-02-33	CRANK, kick	1	Yamaha Black
2	1W1-15621-01	BOSS, kick crank	1	
3	90201-12541	WASHER, plate	1	
4	93430-08007	CIRCLIP (E-8)	1	
5	90501-10459	SPRING, compression	1	
6	93503-16010	BALL (3/16 inch)	1	
7	91316-08025	BOLT, hexagon socket head	1	
8	1W1-15660-00	KICK AXLE ASS'Y	1	
9	90468-26048	CLIP (315-15687-00)	1	
10	1W1-15641-00	GEAR, kick (27T)	1	
11	248-15654-00	HOLDER, kick gear	2	
12	93410-30012	CIRCLIP (S-30)	1	
13	401-15676-00	COVER, spring	1	
14	90508-26346	SPRING, torsion	1	
15	1W1-15666-00	SPACER	1	
16	93101-17062	OIL SEAL (S-17-25-4)	1	
17	1W1-15618-01	COVER, kick crank boss	1	
18	90336-06030	PLUG	1	

Fig. 9 INTAKE



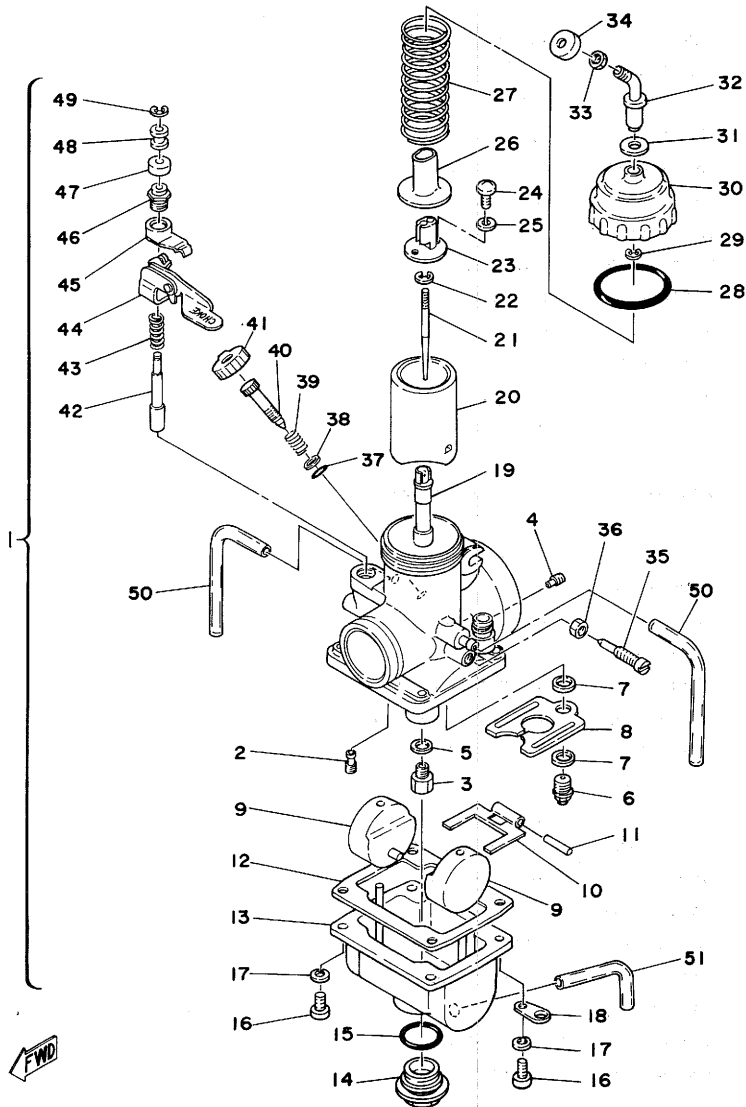
Ref.No.	Part No.	Description	Q'ty	Remarks
9- 1	2X3-14411-00	CASE, air cleaner	1	
2	2X3-14462-00	SEAL	1	
3	2X3-14450-00	ELEMENT ASS'Y	1	
4	2X4-14468-00	PLATE, element set	1	
5	90175-06012	NUT, wing	1	
6	2X3-14477-00	PLATE	1	
7	97701-40516	SCREW, panhead tapping	3	
8	2X3-14412-00	CAP, case	1	Competition Yellow
	2Y5-14412-00	CAP, case	1	Clean White
9	92901-06600	WASHER, plate	4	
10	92501-06020	SCREW, panhead	4	
11	92501-06025	SCREW, panhead	3	
12	92901-06100	WASHER, spring	3	
13	90387-07391	COLLAR (437-21633-00)	3	
14	90480-14102	GROMMET (214-21717-00)	3	
15	90480-14100	GROMMET	2	
16	2X3-21737-00	EMBLEM	1	
17	90460-85135	CLAMP, hose	1	
18	2X3-14453-00	JOINT	1	
19	90460-64065	CLAMP, hose (310-14455-00)	1	
20	90460-49058	CLAMP, hose (278-14455-00)	1	
21	1W1-13565-00	JOINT, carburetor	1	
22	2X3-13610-00	REED VALVE ASS'Y	1	
23	2X3-13613-00	. REED, valve	2	
24	311-13616-01	. STOPPER, reed valve	2	
25	92901-03100	. WASHER, spring	4	
26	98512-03008	. SCREW, panhead	4	
27	311-13621-01	PACKING, valve seat	1	
28	97301-06025	BOLT, hexagon	4	
29	92901-06600	WASHER, plate	4	
30	2X3-14452-00	SEAL	1	

Fig. 10 CARBURETOR



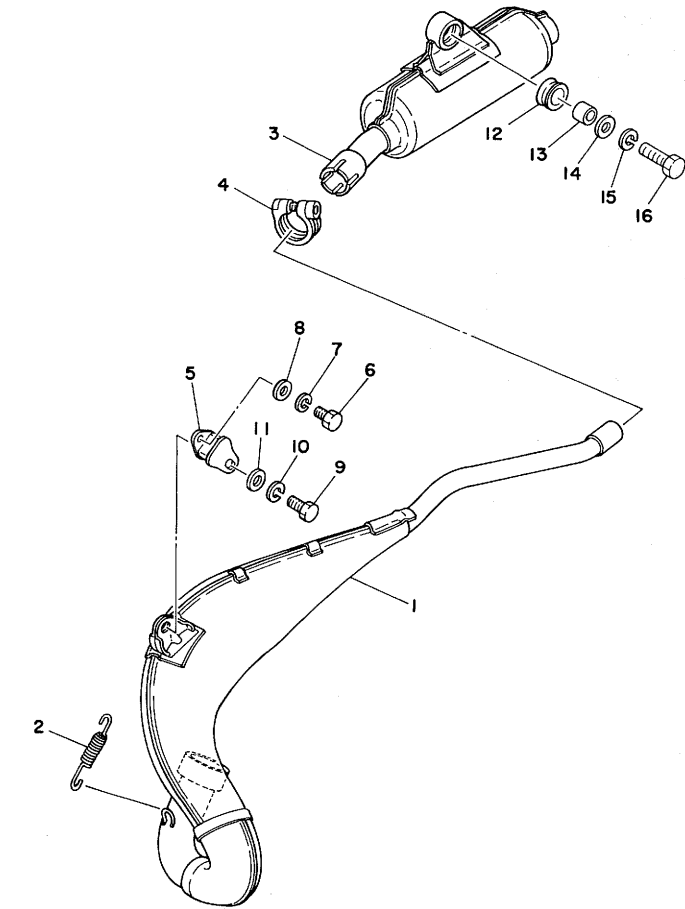
Ref.No.	Part No.	Description	Q'ty	Remarks
10- 1	2X3-14101-00	CARBURETOR ASS'Y	1	
2	193-14142-60	. JET, pilot (#60)	1	
3	137-14143-62	. JET, main (#310)	} U.R. 1	STD
	137-14143-64	. JET, main (#320)		
	137-14143-66	. JET, main (#330)		
4	239-14172-20	. JET, air (#2.0)	1	
5	537-14153-00	. RING	1	
6	239-14190-33	. VALVE SEAT ASS'Y (#3.3)	1	
7	239-14195-00	. WASHER, valve seat	2	
8	483-14146-00	. PLATE	1	
9	310-14185-00	. FLOAT	2	
10	310-14187-00	. ARM, float	1	
11	127-14186-00	. PIN, float	1	
12	483-14184-00	. GASKET, float chamber	1	
13	2K6-14181-16	. BODY, float chamber	1	
14	2K6-14115-00	. PLUG, screw	1	
15	2K6-14147-00	. O-RING	1	
16	98501-05016	. SCREW, panhead	4	
17	92901-05100	. WASHER, spring	4	
18	313-14146-00	. PLATE	2	
19	239-14141-48	. NOZZLE, main (P-8)	1	
20	509-14112-30	. VALVE, throttle (#3.0)	1	
21	239-14116-22	. NEEDLE (6F22-3)	1	
22	164-14137-00	. CLIP	1	
23	509-14274-00	. CONNECTOR	1	
24	98501-03008	. SCREW, panhead	2	
25	92901-03100	. WASHER, spring	2	
26	509-14136-00	. SEAT	1	
27	363-14131-00	. SPRING, throttle valve	1	
28	93210-40289	. O-RING (2-40)	1	
29	363-14137-00	. CLIP	1	
30	500-14158-00	. TOP, mixing chamber	1	
31	509-14198-00	. GASKET	1	

Fig. 10 CARBURETOR



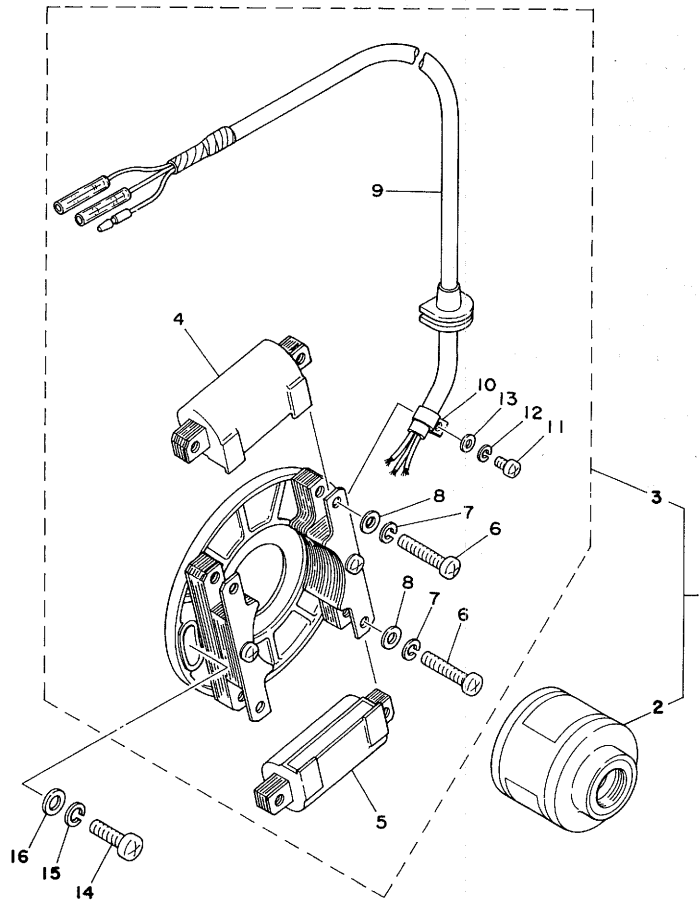
Ref.No.	Part No.	Description	Q'ty	Remarks
10-32	500-14155-00	. HOLDER, guide	1	
33	127-14161-00	. NUT, wire adjusting	1	
34	1M1-14169-00	. CAP	1	
35	204-14122-00	. SCREW, throttle	1	
36	802-14161-00	. NUT, wire adjusting	1	
37	812-14147-00	. O-RING	1	
38	812-14235-00	. WASHER	1	
39	137-14134-00	. SPRING, air adjusting	1	
40	2X3-14123-00	. SCREW, air adjusting	1	
41	1W1-14968-00	. CAP	1	
42	1W1-14171-00	. PLUNGER, starter	1	
43	256-14135-00	. SPRING, plunger	1	
44	1W1-14175-01	. LEVER, starter left	1	
45	275-14178-00	. PLATE, spring	1	
46	802-14174-00	. CAP, plunger	1	
47	802-14173-00	. COVER, plunger cap	1	
48	583-14918-00	. RING, plunger	1	
49	737-14137-00	. CLIP, plunger	1	
50	310-14197-00	. PIPE, air vent	2	
51	493-14196-00	. PIPE, over flow	1	

Fig. 11 EXHAUST



Ref.No.	Part No.	Description	Q'ty	Remarks
11- 1	2X3-14610-00	EXHAUST PIPE ASS'Y	1	
2	90507-20030	SPRING, tension	2	
3	2X3-14753-00	SILENCER	1	
4	537-14788-00	BAND, silencer	1	
5	483-14781-00	STAY, muffler	1	
6	97301-06016	BOLT, hexagon	1	
7	92901-06100	WASHER, spring	1	
8	90901-06600	WASHER, plate	1	
9	97301-08020	BOLT, hexagon	1	
10	92901-08100	WASHER, spring	1	
11	92901-08600	WASHER, plate	1	
12	565-14747-00	DAMPER	1	
13	90387-08258	COLLAR	1	
14	90201-08113	WASHER, plate (611-48556-30)	1	
15	92901-08100	WASHER, spring	1	
16	97301-08030	BOLT, hexagon	1	

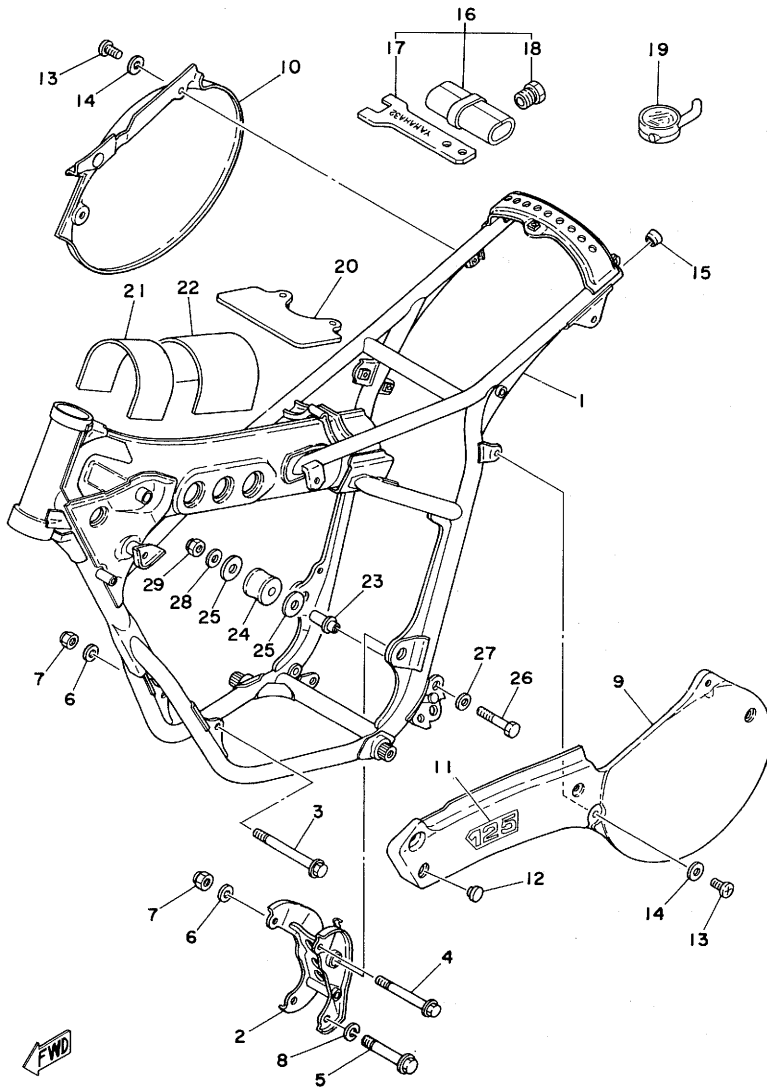
Fig. 12 C. D. I. MAGNETO



Ref.No.	Part No.	Description	Qty	Remarks
12- 1	2X6-85500-11	C.D.I. MAGNETO ASS'Y	1	
2	2X6-85550-10	.. ROTOR ASS'Y	1	
3	2X6-85510-10	.. STATOR ASS'Y	1	
4	2X6-85566-10	.. COIL, charge 1	1	
5	2X6-85567-10	.. COIL, charge 2	1	
6	98502-05030	.. SCREW, panhead	6	
7	92901-05100	.. WASHER, spring	6	
8	92901-05600	.. WASHER, plate	6	
9	2X6-85515-10	.. LEAD WIRE ASS'Y	1	
10	109-81328-11	.. CLAMP, lead wire	1	
11	98501-04008	.. SCREW, panhead	1	
12	92901-04100	.. WASHER, spring	1	
13	92901-04600	.. WASHER, plate	1	
14	92501-06020	SCREW, panhead	2	
15	92901-06100	WASHER, spring	2	
16	92901-06600	WASHER, plate	2	

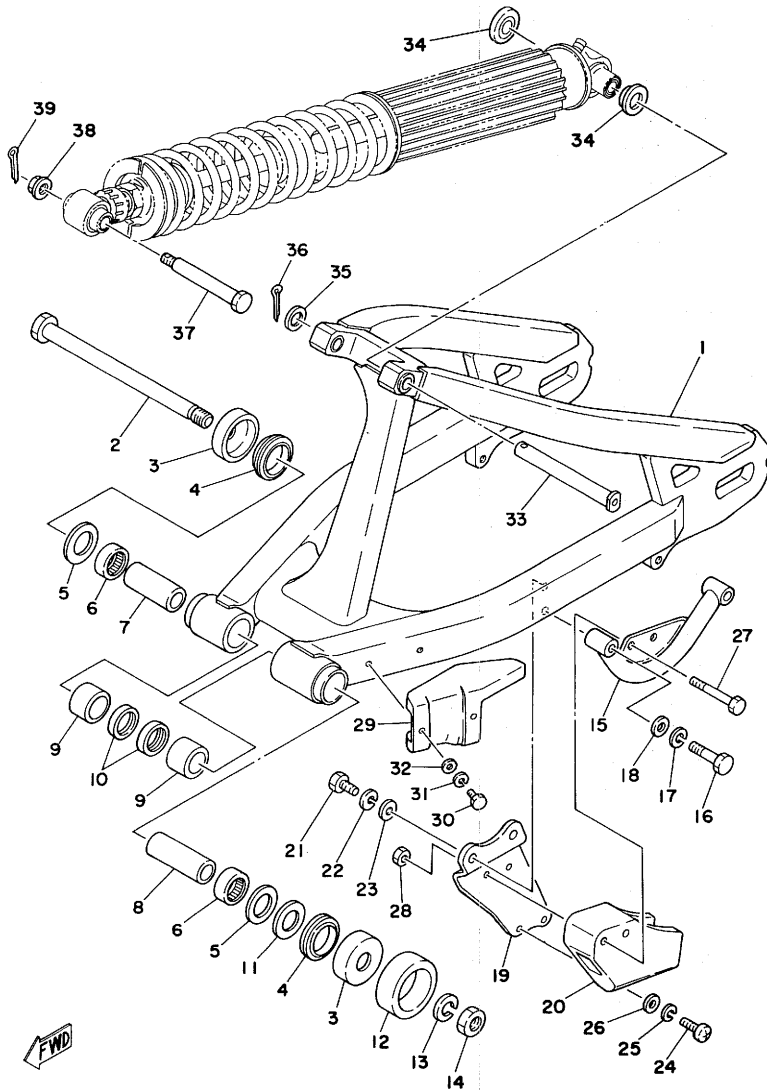


Fig. 13 FRAME · SIDE COVER



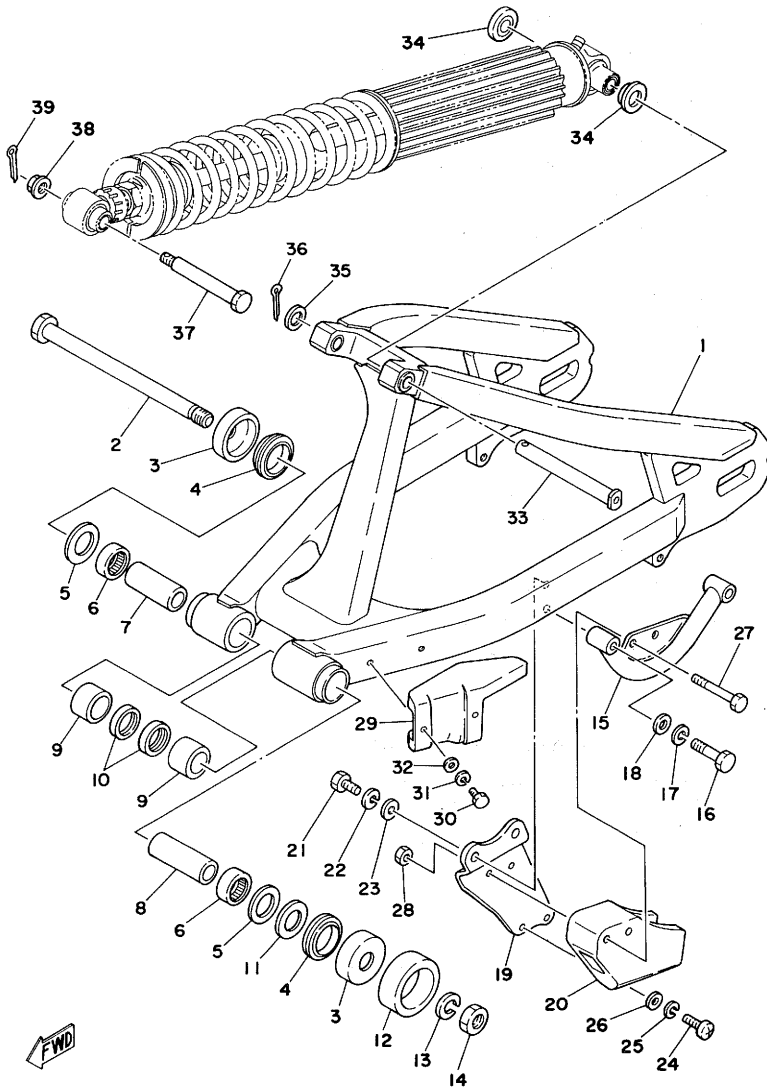
Ref.No.	Part No.	Description	Q'ty	Remarks
13- 1	2X3-21110-00-33	FRAME COMP.	1	Yamaha Black
2	2X3-21410-00	ENGINE BRACKET COMP.	1	
3	90105-08099	BOLT	1	
4	90105-08100	BOLT	1	
5	90105-10037	BOLT	1	
6	92901-08200	WASHER, plain	2	
7	90185-08054	NUT, U	2	
8	92901-10100	WASHER, spring	1	
9	2X3-21711-00-98	COVER, side left	1	Competition Yellow /Low Gloss Black
	2X3-21711-10-98	COVER, side left	1	Clean White
10	2X3-21721-00-98	COVER, side right	1	/Low Gloss Black
	2X3-21721-10-98	COVER, side right	1	Competition Yellow /Low Gloss Black
			1	Clean White
			1	/Low Gloss Black
11	2X3-21737-00	EMBLEM	1	
12	431-24181-00	DAMPER, locating	3	
13	91901-06012	SCREW, bind	5	
14	90201-06067	WASHER, plate	5	
15	90339-13005	PLUG	2	
16	2K7-28100-10	TOOL ASS'Y	1	
17	1W1-28135-00	. SPANNER, special	1	
18	2K7-85555-00	. ROTOR, puller	1	
19	2X4-2811A-00	GAUGE, fork air chamber	1	
20	1W1-24181-00	DAMPER, tank locating 1	1	
21	1W1-24183-00	DAMPER, tank locating 3	1	
22	2X4-24183-00	DAMPER, tank locating 3	1	
23	2K7-2148A-00	SHAFT	1	
24	2K6-22178-00	TENSIONER	1	
25	90201-13202	WASHER, plate (201-15653-00)	2	
26	97301-08050	BOLT, hexagon	1	
27	92901-08200	WASHER, plain	1	
28	92901-08600	WASHER, plate	1	
29	95601-08100	NUT, U	1	

Fig. 14 REAR ARM



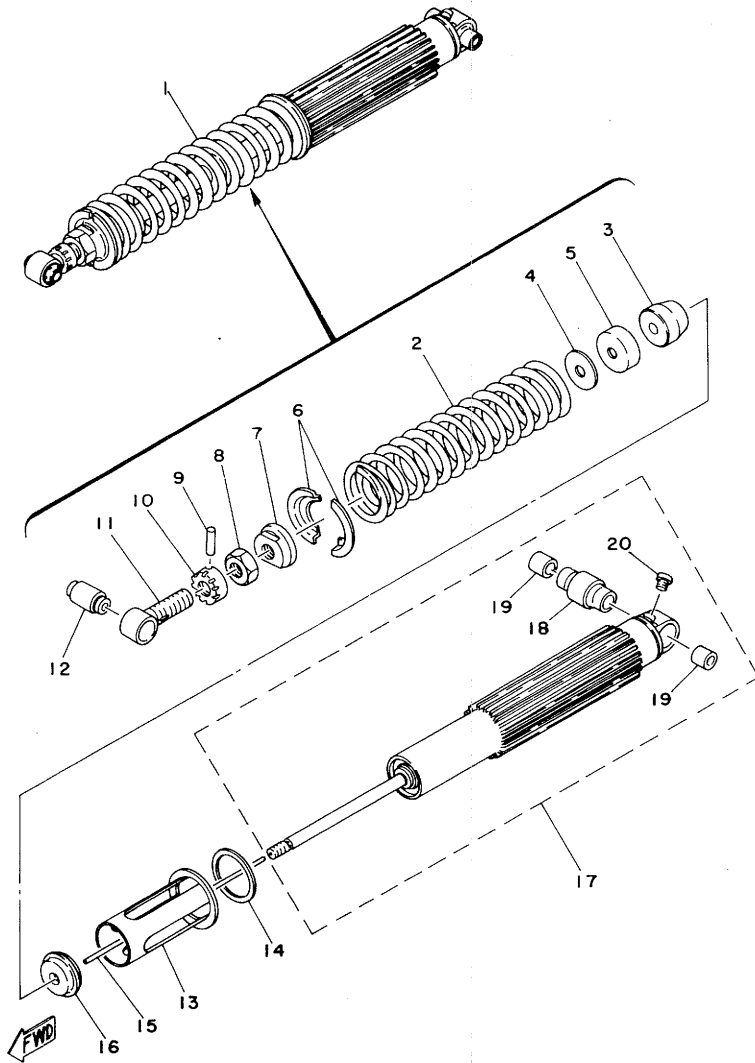
Ref.No.	Part No.	Description	Q'ty	Remarks
14- 1	2X3-22110-00-35	REAR ARM COMP.	1	Silver
2	1W1-22141-00	SHAFT, pivot	1	
3	2K6-22128-00	COVER, thrust	2	
4	93108-35004	OIL SEAL (OSO-35-41.5-8)	2	
5	90201-22680	WASHER, plate	2	
6	93317-22214	BEARING	2	
7	90380-16063	BUSHING, solid	1	
8	90380-16056	BUSHING, solid	1	
9	90386-22097	BUSHING	2	
10	93109-22018	OIL SEAL (SDO-20.9-28-4)	2	
11	240-22127-00	SHIM	U.N.	
12	2W6-22151-00	SEAL, guard	1	
13	92901-16100	WASHER, spring	1	
14	90170-16111	NUT, hexagon	1	
15	2X4-22153-00	GUARD, chain	1	
16	97301-08035	BOLT, hexagon	2	
17	92901-08100	WASHER, spring	2	
18	92901-08600	WASHER, plate	2	
19	2X4-22179-00	ARM, chain tensioner	1	
20	2X4-22199-00	SUPPORT, chain	1	
21	97301-08016	BOLT, hexagon	2	
22	92901-08100	WASHER, spring	2	
23	92901-08600	WASHER, plate	2	
24	92501-06020	SCREW, panhead	2	
25	92901-06100	WASHER, spring	2	
26	92901-06600	WASHER, plate	2	
27	97301-06050	BOLT, hexagon	2	
28	95601-06100	NUT, U	2	
29	2X4-22147-00	PROTECTOR, chain	1	
30	97301-05010	BOLT, hexagon	2	
31	92901-05100	WASHER, spring	2	
32	92901-05200	WASHER, plain	2	
33	90240-12060	PIN, with hole	1	

Fig. 14 REAR ARM



Ref.No.	Part No.	Description	Q'ty	Remarks
14-34	1W1-22128-00	COVER, thrust	2	
35	92901-12600	WASHER, plate	1	
36	91401-30022	PIN, cotter	1	
37	90109-08480	BOLT	1	
38	90179-08243	NUT	1	
39	91401-20015	PIN, cotter	1	

Fig. 15 REAR CUSHION

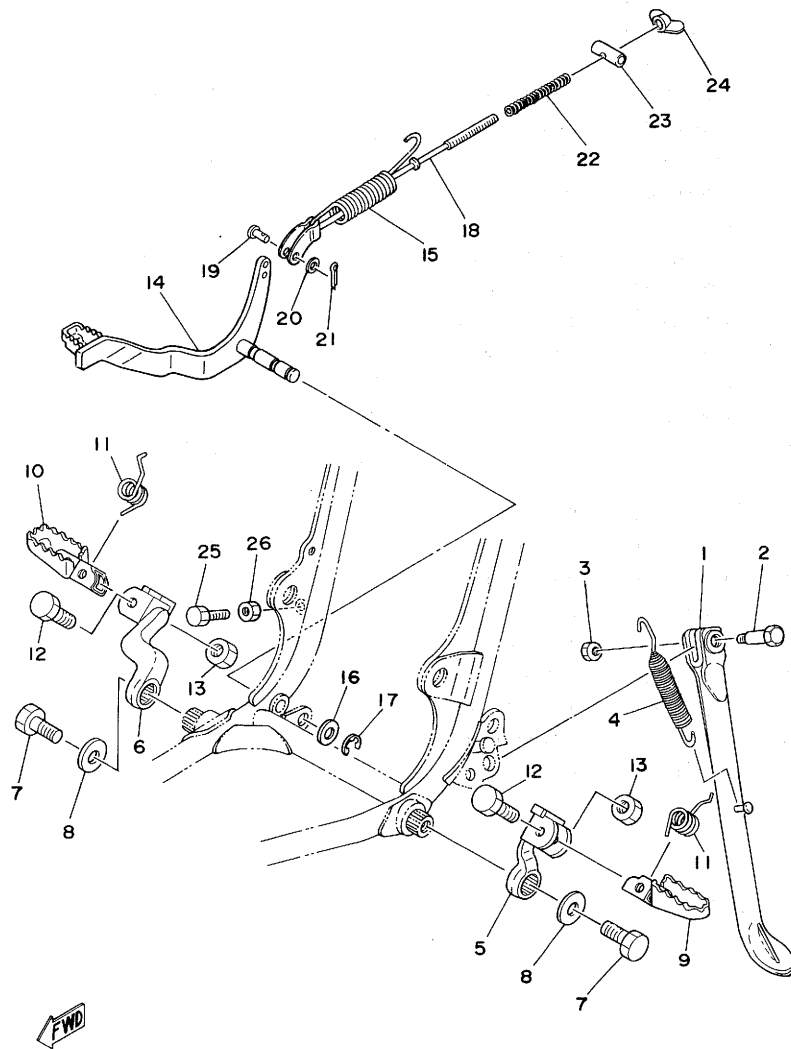


Ref.No.	Part No.	Description	Q'ty	Remarks
15- 1	2X3-22210-00	REAR CUSHION ASS'Y	1	
2	90501-98540	SPRING, compression (K ₁ =2.17 K ₂ =3.75kg/mm)	1	Painted Pink
3	2X4-22493-00	STOPPER, bump	1	
4	2X4-22228-00	SUPPORT, bump stop	1	
5	2X4-22221-00	COVER, bump stop	1	
6	2K6-22214-00	GUIDE, spring upper	2	
7	2K6-22213-00	SEAT, spring upper	1	
8	90170-20213	NUT, hexagon	1	
9	93604-26132	PIN, dowel	1	
10	1W1-22497-00	NUT, adjusting	1	
11	2X4-22219-00	BRACKET, upper	1	
12	1W1-22216-00	BUSHING, upper bracket	1	
13	2X4-22224-00	GUIDE, spring 2	1	
14	2X3-22223-00	SEAT, spring under	1	
15	2X4-22489-00	ROD, push	1	
16	2X4-22472-00	CAP, case	1	
17	2X3-22401-00	DAMPER SUB ASS'Y	1	
18	1W1-22226-00	BUSHING, lower	1	
19	90380-12051	BUSHING, solid	2	
20	98501-04005	SCREW, panhead	1	

ALTERNATE PARTS

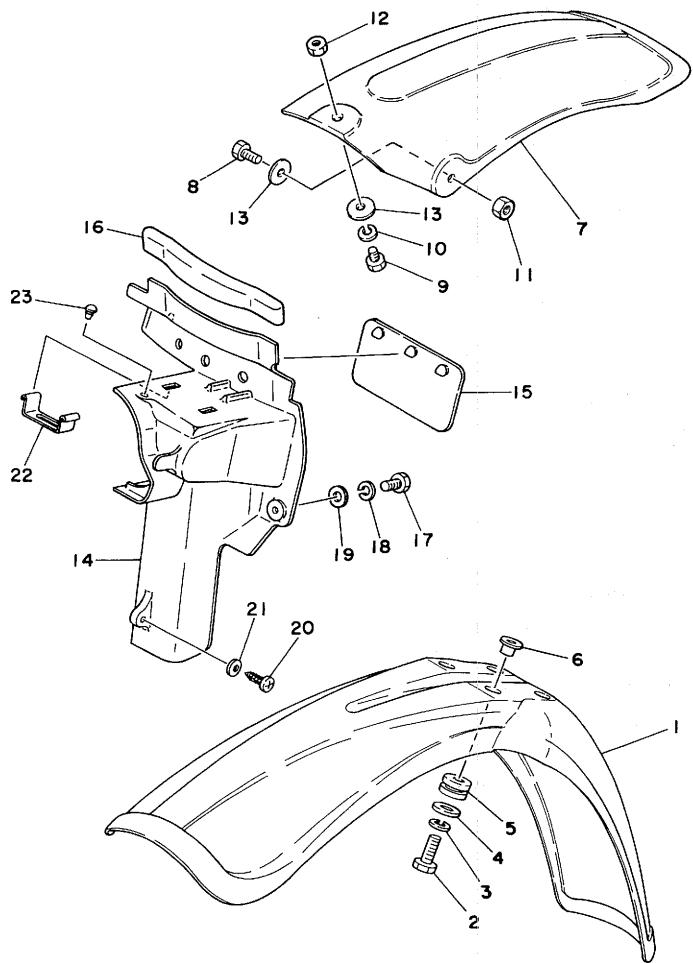
2	90501-98478	SPRING, compression (K ₁ =1.91 K ₂ =4.02kg/mm)	1	Soft (Painted Yellow)
	90501-98477	SPRING, compression (K ₁ =2.71 K ₂ =4.03kg/mm)	1	Hard (Painted Red)

Fig. 16 STAND · FOOTREST · BRAKE PEDAL



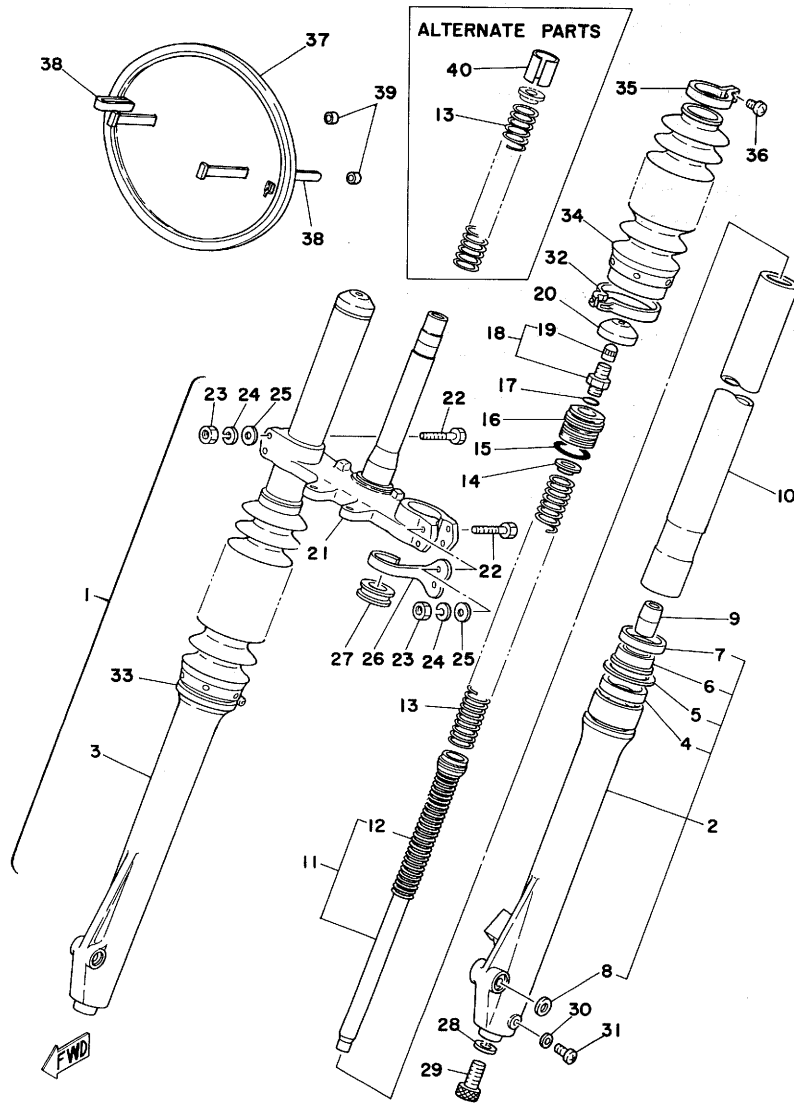
Ref.No.	Part No.	Description	Qty	Remarks
16- 1	2K6-27311-00	STAND, side	1	
2	90109-10473	BOLT	1	
3	95301-10700	NUT, hexagon	1	
4	90507-29008	SPRING, tension	1	
5	2W6-27412-00	BRACKET, footrest left	1	
6	2W6-27422-00	BRACKET, footrest right	1	
7	97311-10016	BOLT, hexagon	2	
8	90201-10639	WASHER, plate	2	
9	2W6-27411-00	FOOTREST, left	1	
10	2W6-27421-00	FOOTREST, right	1	
11	90508-20023	SPRING, torsion (214-27426-00)	2	
12	90101-09428	BOLT, hexagon	2	
13	95601-08100	NUT, U	2	
14	2X3-27211-00-33	PEDAL, brake	1	Yamaha Black
15	90506-20193	SPRING, tension	1	
16	92901-12600	WASHER, plate	1	
17	93430-09019	CIRCLIP	1	
18	2X3-27231-00	ROD, brake	1	
19	90240-06040	PIN, with hole	1	
20	92901-06200	WASHER, plain	1	
21	91401-20012	PIN, cotter	1	
22	90501-10245	SPRING (180-27236-00)	1	
23	90249-12008	PIN (156-27237-00)	1	
24	90175-06013	NUT, wing	1	
25	97301-06020	BOLT, hexagon	1	
26	95301-06700	NUT, hexagon	1	

Fig. 17 FRONT FENDER · REAR FENDER



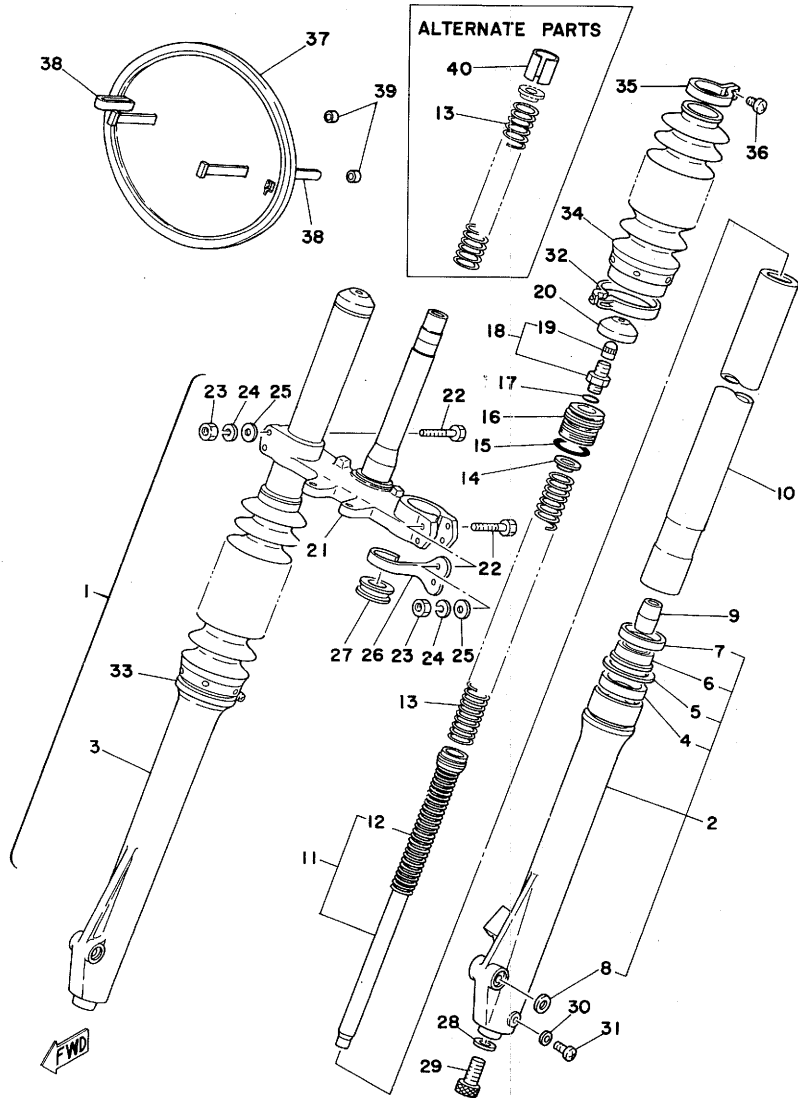
Ref.No.	Part No.	Description	Q'ty	Remarks
17- 1	1W1-21511-00	FENDER, front	1	Competition Yellow
	1W1-21511-10	FENDER, front	1	Clean White
2	97301-06025	BOLT, hexagon	4	
3	92901-06010	WASHER, spring	4	
4	90201-06067	WASHER, plate	4	
5	90480-14198	GROMMET	4	
6	90387-07391	COLLAR	4	
7	2K6-21611-00	FENDER, rear	1	Competition Yellow
	2K6-21611-10	FENDER, rear	1	Clean White
8	97301-06014	BOLT, hexagon	2	
9	97301-06016	BOLT, hexagon	1	
10	92901-06100	WASHER, spring	1	
11	95601-06100	NUT, U	2	
12	95301-06700	NUT, hexagon	1	
13	90201-06067	WASHER, plate	3	
14	2X3-21629-00	MUD GUARD COMP.	1	
15	1M1-21621-00	FLAP	1	
16	565-21746-00	SEAL, mud guard	1	
17	97301-06014	BOLT, hexagon	2	
18	92901-06100	WASHER, spring	2	
19	90201-06067	WASHER, plate	2	
20	97701-50120	SCREW, panhead tapping	1	
21	92901-05600	WASHER, plate	1	
22	2X3-21274-00	BRACKET, CDI unit	1	
23	90338-06018	PLUG	1	

Fig. 18 FRONT FORK



Ref.No.	Part No.	Description	Q'ty	Remarks
18- 1	2X3-23101-L0	FRONT FORK ASS'Y	1	
2	2X3-23126-L0	TUBE, outer left	1	
3	2X3-23136-L0	TUBE, outer right	1	
4	1W1-23145-L0	OIL SEAL	2	
5	1W1-23156-L0	RING, snap	2	
6	1G8-23144-L1	SEAL, dust	2	
7	1W1-23148-L0	DUST SEAL CASE, outer tube	2	
8	1W1-23168-L0	WASHER	2	
9	1W1-23173-L0	SPINDLE	2	
10	2X3-23110-L0	INNER TUBE COMP.	2	
11	2X3-23170-L0	CYLINDER COMP., front fork	2	
12	2X3-23152-00	SUB SPRING, front fork	2	
13	2X3-23141-L0	SPRING, front fork (K=0.255 kg/mm)	2	
14	1W1-23142-L0	GUIDE, fork spring	2	
15	1W1-23114-L0	O-RING	2	
16	1W1-23111-L0	CAP	2	
17	509-23163-L0	O-RING	2	
18	509-23190-L0	AIR VALVE ASS'Y	2	
19	509-23184-L0	CAP, air valve	2	
20	1W1-23185-L0	CAP	2	
21	2X7-23340-00-33	UNDER BRACKET COMP.	1	Yamaha Black
22	90109-08397	BOLT	4	
23	95311-08600	NUT, hexagon	4	
24	92901-08100	WASHER, spring	4	
25	90201-08544	WASHER, plate	4	
26	1W1-23317-01	HOLDER, wire	1	
27	1W1-23389-00	GUIDE, wire	1	
28	509-23158-L0	PACKING	2	
29	278-23181-50	BOLT, hexagon sockethead	2	
30	122-23129-00	GASKET, drain plug	2	
31	122-23119-01	PLUG, drain	2	
32	1W1-23318-L0	CLIP, front fork	1	
33	509-23489-L0	BOOT BAND COMP.	1	

Fig. 18 FRONT FORK

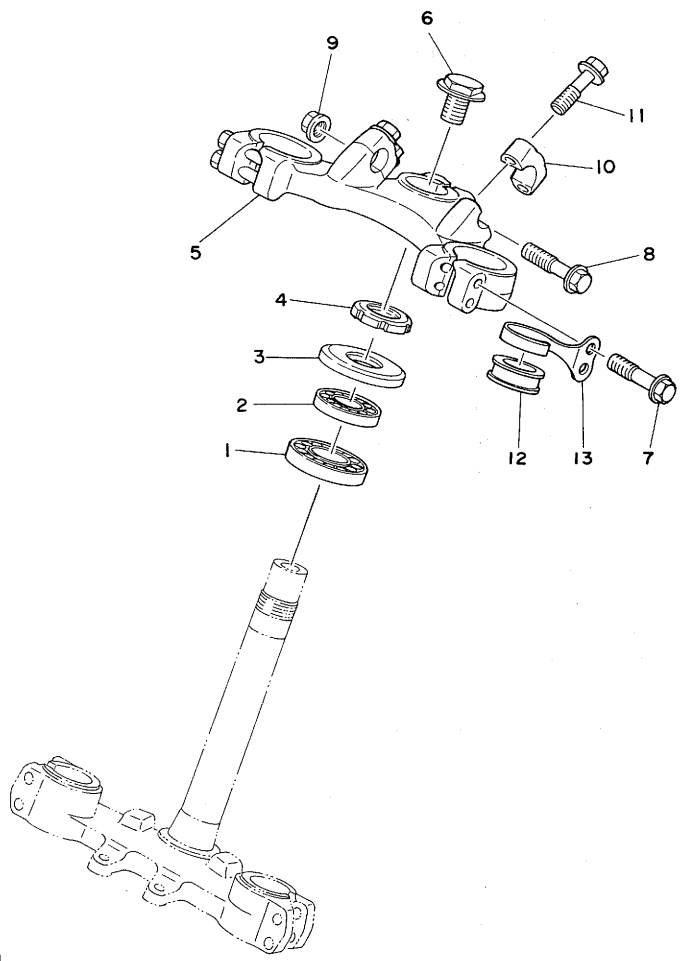


Ref.No.	Part No.	Description	Q'ty	Remarks
18-34	2X3-23191-L0	BOOT	2	Yellow
	2X3-23191-M0	BOOT	2	Black
35	341-92090-60	BAND, boot	2	
36	509-23194-L0	SCREW	2	
37	2X4-23485-00	PLATE, number	1	
38	2X4-23489-00	BAND	2	
39	90446-09158	HOSE	2	

ALTERNATE PARTS

13	2X3-23141-10	SPRING, front fork (K=0.223kg/mm)	2	Soft (Use spacer 1W1-23118-L0 with set)
	2X3-23141-20	SPRING, front fork	2	Hard (Not needed spacer)
40	1W1-23118-L0	SPACER	2	

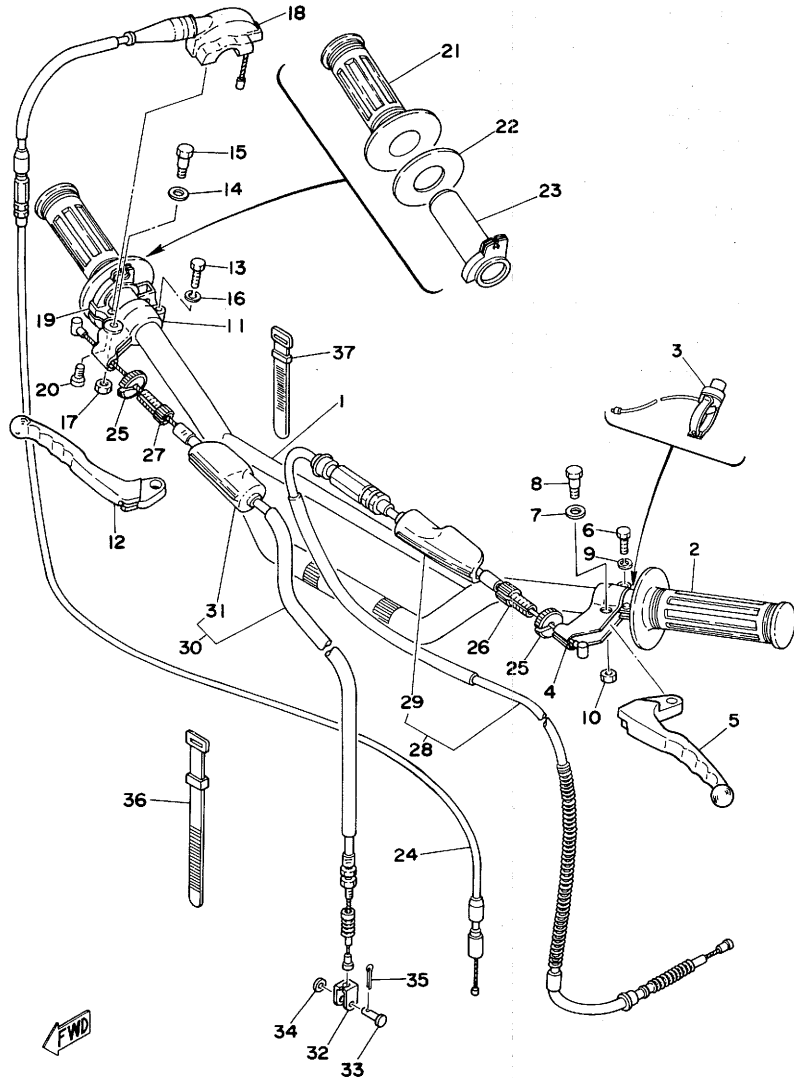
Fig. 19 STEERING



Ref.No.	Part No.	Description	Q'ty	Remarks
19- 1	93332-00008	BEARING	1	
2	93332-00001	BEARING	1	
3	1W1-23416-00	COVER, ball race	1	
4	90179-25033	NUT (137-23454-00)	1	
5	1W1-23435-01-98	CROWN, handle	1	Low Gloss Black
6	90105-14060	BOLT	1	
7	95821-08040	BOLT, flange	4	
8	95821-08055	BOLT, flange	1	
9	95701-08100	NUT, flange	1	
10	1E6-23441-00	HOLDER, handle upper	2	
11	95821-08035	BOLT, flange	4	
12	1W1-23389-00	GUIDE, wire	1	
13	1W1-23317-01	HOLDER, wire	1	

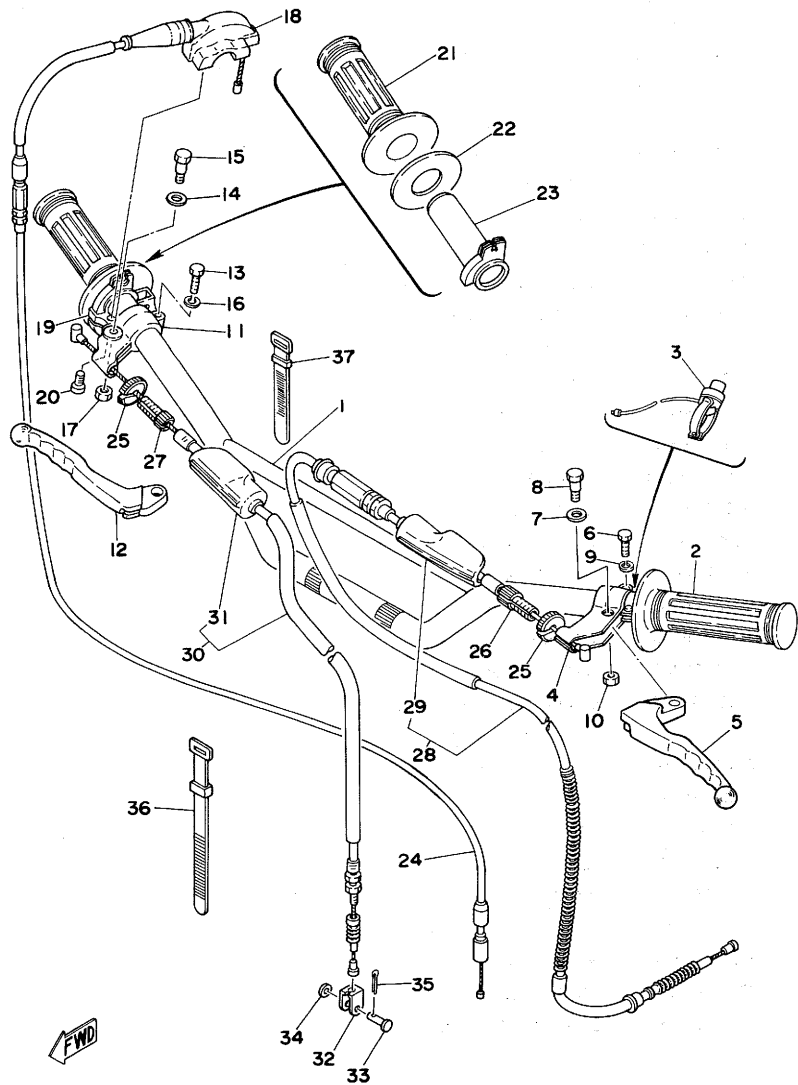
← FWD

Fig. 20 HANDLE · WIRE



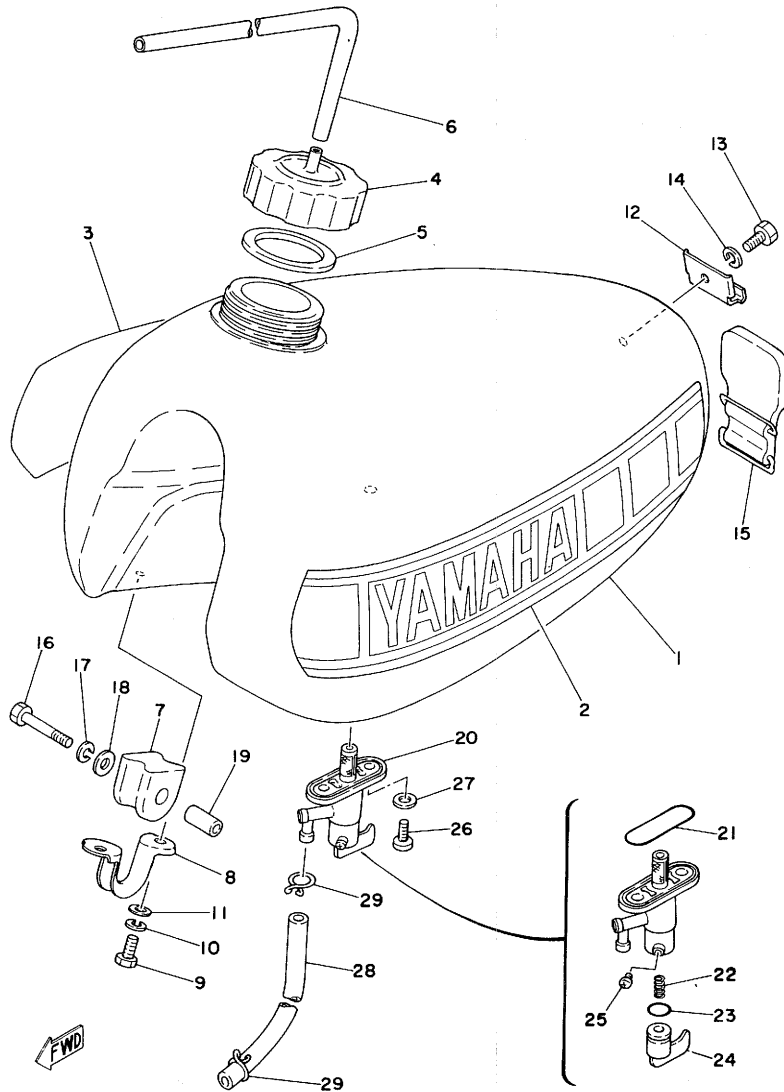
Ref.No.	Part No.	Description	Q'ty	Remarks
20- 1	2X4-26111-00	HANDLE	1	Low Gloss Black
2	583-26241-00	GRIP, left	1	
3	1J4-83976-00	SWITCH, handle 1	1	
4	461-82911-00	HOLDER, lever left	1	Low Gloss Black
5	2K6-83912-00	LEVER, left	1	
6	97301-06022	BOLT, hexagon	1	
7	90201-08083	WASHER, plate (156-27226-00)	1	
8	90109-06410	BOLT	1	
9	92901-06100	WASHER, spring	1	
10	95601-06100	NUT, U	1	
11	516-82921-30	HOLDER, lever right	1	Low Gloss Black
12	2K6-83922-00	LEVER, right	1	
13	97301-06022	BOLT, hexagon	1	
14	90201-08083	WASHER, plate (156-27226-00)	1	
15	90109-06410	BOLT	1	
16	92901-06010	WASHER, spring	1	
17	95601-06100	NUT, U	1	
18	322-26281-00	CAP, grip upper	1	
19	322-26282-00	CAP, grip under	1	
20	98503-05015	SCREW, panhead	2	
21	583-26242-00	GRIP, right	1	
22	1W1-26249-00	RING, leaf	1	
23	322-26243-00	TUBE, guide	1	
24	2K8-26311-01	WIRE, throttle 1	1	
25	90179-08148	NUT (168-26344-00)	2	
26	90123-08013	BOLT, wire adjusting (146-26346-00)	1	
27	90123-08046	BOLT, wire adjusting	1	
28	2K5-26335-00	WIRE, clutch	1	
29	382-26372-01	. COVER, lever	1	
30	1W1-26341-01	WIRE, brake front	1	
31	382-26372-01	. COVER, lever	1	
32	156-26347-00	JOINT, wire	1	
33	90240-08012	PIN, with hole (156-27229-00)	1	

Fig. 20 HANDLE · WIRE



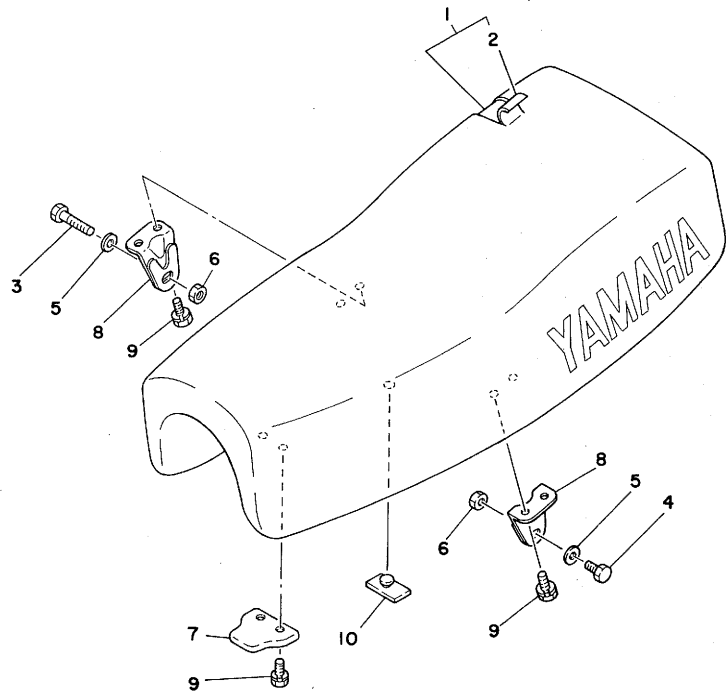
Ref.No.	Part No.	Description	Q'ty	Remarks
20-34	90201-08083	WASHER, plate (156-27226-00)	1	
35	91401-20012	PIN, cotter	1	
36	437-83936-10	BAND, switch cord	1	
37	437-83936-00	BAND, switch cord	3	

Fig. 21 FUEL TANK



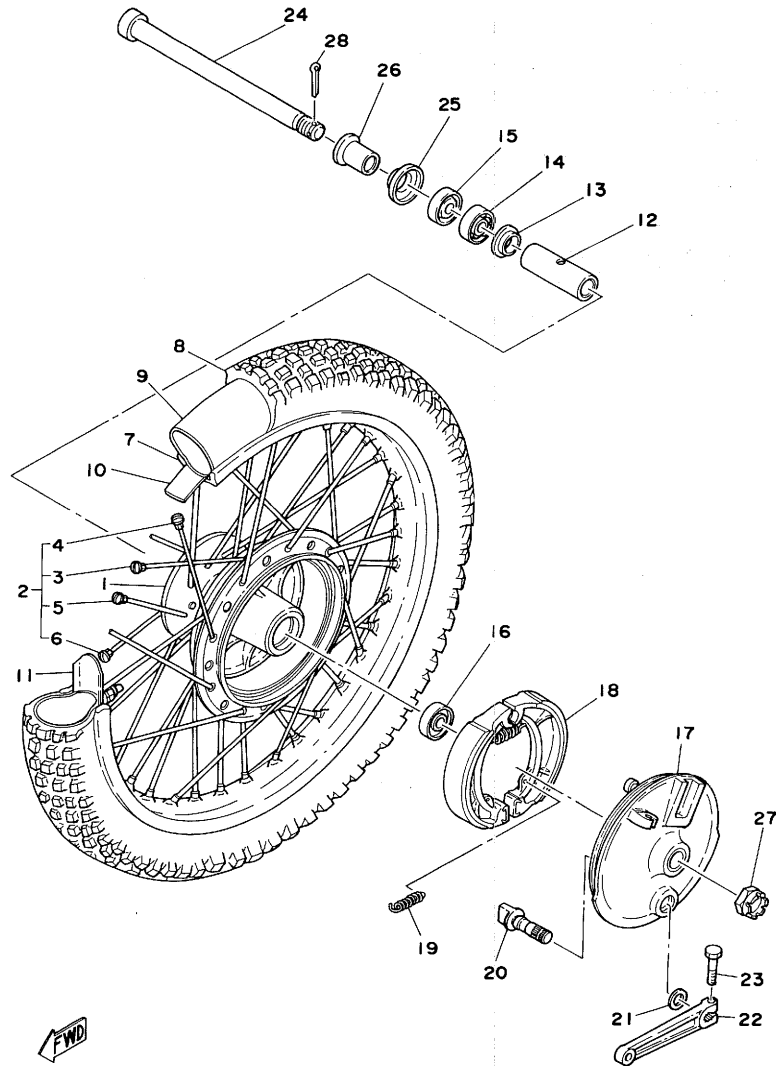
Ref.No.	Part No.	Description	Qty	Remarks
21- 1	2X3-24110-00	FUEL TANK COMP.	1	Competition Yellow
	2X3-24110-10	FUEL TANK COMP.	1	Clean White
2	2X3-24244-20	GRAPHIC, fuel tank left	1	for Competition Yellow
	2X3-24244-30	GRAPHIC, fuel tank left	1	for Clean White
3	2X3-24245-20	GRAPHIC, fuel tank right	1	for Competition Yellow
	2X3-24245-30	GRAPHIC, fuel tank right	1	for Clean White
4	1W1-24611-00	BODY, cap	1	
5	1W1-24612-00	GASKET, tank cap	1	
6	90445-09117	HOSE (170-21766-00 5-540)	1	
7	1W1-24182-01	DAMPER, locating 2	2	
8	1W1-24144-01	HOLDER, damper	2	
9	97301-06012	BOLT, hexagon	4	
10	92901-06100	WASHER, spring	4	
11	92901-06600	WASHER, plate	4	
12	1W1-24192-00	BRACKET, fuel tank	1	
13	97301-06012	BOLT, hexagon	1	
14	92901-06100	WASHER, spring	1	
15	1W1-24173-00	BAND, tankfitting 1	1	
16	97321-06035	BOLT, hexagon	2	
17	92901-06100	WASHER, spring	2	
18	90201-06407	WASHER, plate	2	
19	90387-07393	COLLAR (308-84557-00 7-10-20)	2	
20	2K5-24500-00	FUEL COCK ASS'Y	1	
21	214-24512-00	GASKET, body	1	
22	1A0-24529-01	SPRING	1	
23	1A0-24512-00	O-RING	1	
24	1A0-24524-01	LEVER, cock	1	
25	619-24535-00	SCREW	1	
26	90149-06011	SCREW (256-24143-00)	2	
27	90202-06010	WASHER, plate (178-14766-00)	2	
28	90445-11424	HOSE (7-255)	1	
29	90467-10008	CLIP (143-24356-00)	2	

Fig. 22 SEAT



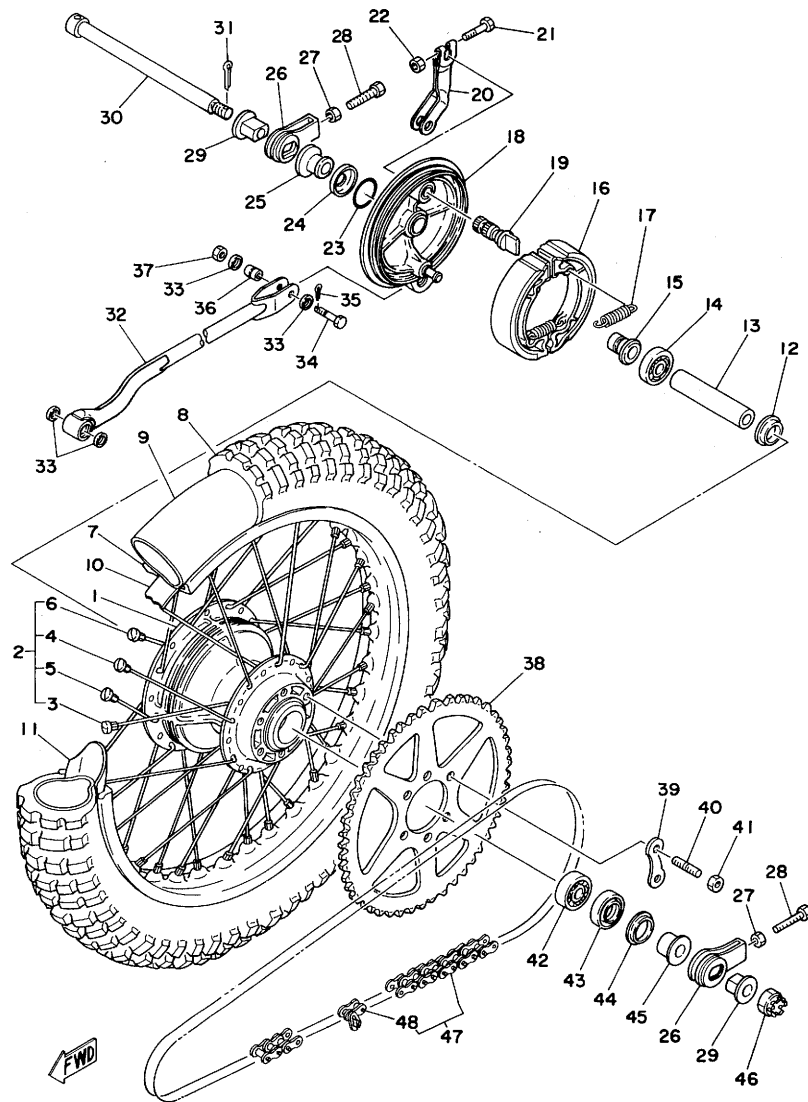
Ref.No.	Part No.	Description	Q'ty	Remarks
22- 1	2K6-24770-90	SEMI DOUBLE SEAT ASS'Y	1	
2	2K6-24771-00	. COVER, seat	1	
3	97301-06035	BOLT, hexagon	1	
4	97301-06016	BOLT, hexagon	1	
5	92901-06200	WASHER, plain	2	
6	95601-06100	NUT, U	2	
7	1M1-24748-00	BRACKET, front	1	
8	1W1-24738-00	BRACKET, seat rear	2	
9	90101-06304	BOLT, hexagon head with washer	6	
10	509-24724-00	DAMPER, seat	6	

Fig. 23 FRONT WHEEL



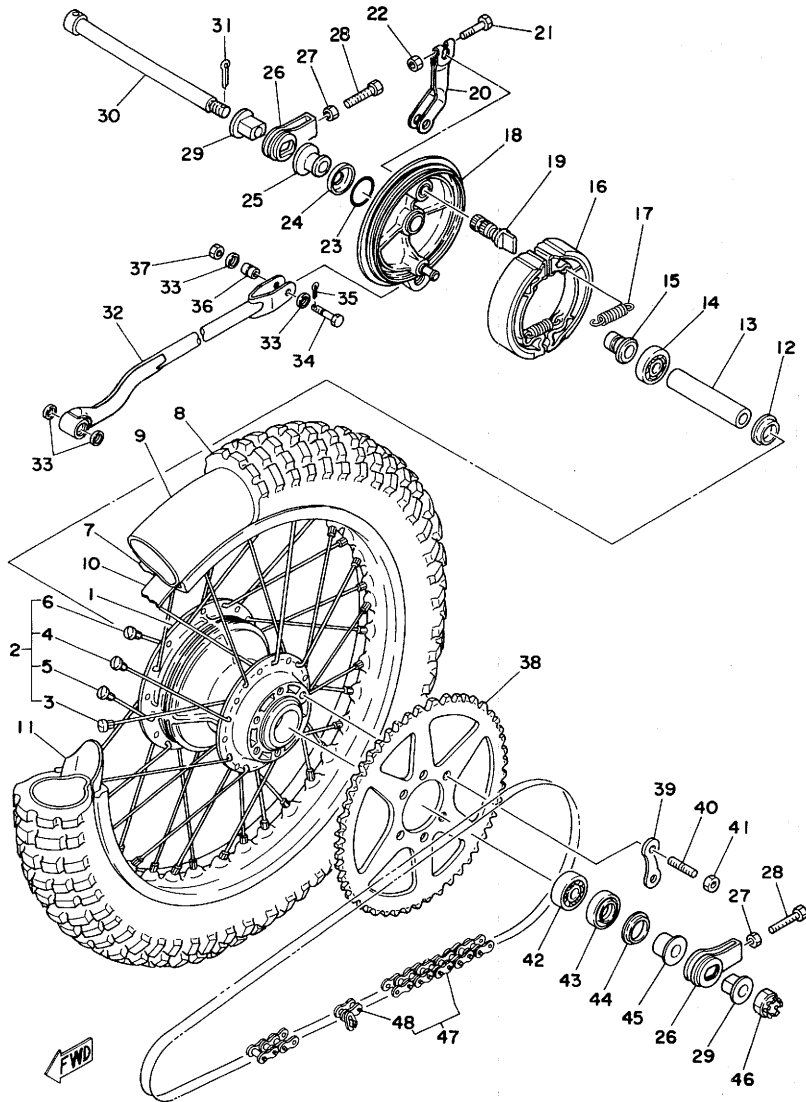
Ref.No.	Part No.	Description	Q'ty	Remarks
23- 1	1K7-25111-10-98	HUB, front	1	Low Gloss Black
2	2W6-25104-00	SPOKE SET, front	1s	
3	2W6-25196-90	. SPOKE SET, inner left (10 PCS)	1s	
4	2W6-25197-90	. SPOKE SET, outer left (10 PCS)	1s	
5	2W6-25179-90	. SPOKE SET, inner right (10 PCS)	1s	
6	2W6-25189-90	. SPOKE SET, outer right (10 PCS)	1s	
7	94416-21104	RIM, front (1.60-21A&)	1	
8	94130-21520	TIRE, front (3.00-21-4PR)	1	
9	94230-21126	TUBE, front (3.00-21)	1	
10	94330-21088	BAND, rim (3.00-21)	1	
11	1T1-25194-00	SPACER, bead	1	
12	90560-15116	SPACER (322-25117-00)	1	
13	146-25116-00	FLANGE, spacer	1	
14	93306-20205	BEARING (B6202)	1	
15	93102-20009	OIL SEAL (SD-20-35-7)	1	
16	93306-20203	BEARING (B6202RS)	1	
17	1W1-25121-01-98	PLATE, brake shoe	1	Low Gloss Black
18	322-25130-00	BRAKE SHOE COMP.	2	
19	90506-16036	SPRING, tension (183-25333-00)	2	
20	322-25151-00	CAMSHAFT	1	
21	137-25159-00	SEAL, camshaft	1	
22	322-25155-00	LEVER, camshaft	1	
23	90101-06291	BOLT, hexagon	1	
24	1W1-25181-00	SHAFT, wheel	1	
25	322-25118-00	COVER, hub dust	1	
26	90387-15600	COLLAR	1	
27	90171-14020	NUT, castle	1	
28	91401-30030	PIN, cotter	1	

Fig. 24 REAR WHEEL



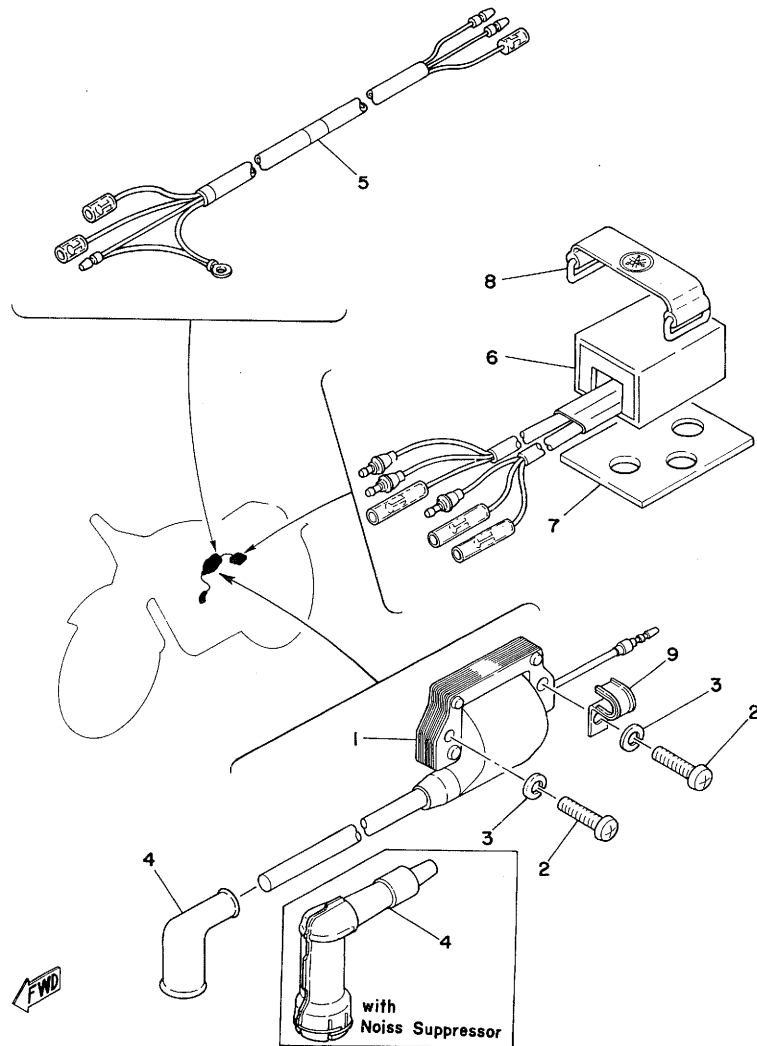
Ref.No.	Part No.	Description	Qty	Remarks	
24-	1	2X3-25311-00-98	HUB, rear	1	Low Gloss Black
	2	537-25304-00	SPOKE SET, rear	1s	
	3	537-25396-90	. SPOKE SET, inner left (10 PCS)	1s	
	4	537-25397-90	. SPOKE SET, outer left (10 PCS)	1s	
	5	537-25391-90	. SPOKE SET, inner right (10 PCS)	1s	
	6	537-25392-90	. SPOKE SET, outer right (10 PCS)	1s	
	7	94418-18141	RIM, rear (1.85-18E)	1	
	8	94141-18519	TIRE, rear (4.10-18-4PR)	1	
	9	94235-18022	TUBE, rear (3.50-18)	1	
	10	94325-18043	BAND, rim (2.50-18)	1	
	11	537-25394-00	SPACER, bead	2	
	12	148-25115-00	FLANGE, spacer	1	
	13	248-25317-00	SPACER, bearing	1	
	14	93306-20203	BEARING (B6202Z)	1	
	15	90387-15714	COLLAR	1	
	16	437-25330-00	BRAKE SHOE COMP.	2	
	17	90506-16036	SPRING, tension (183-25333-00)	2	
	18	2X3-25321-00-98	PLATE, brake shoe	1	Low Gloss Black
	19	2A6-25351-01	CAMSHAFT	1	
	20	2X3-25355-00	LEVER, camshaft	1	
	21	90101-06278	BOLT, hexagon	1	
	22	95301-06600	NUT, hexagon	1	
	23	93210-29282	O-RING	1	
	24	2X3-25327-00	COVER, plate dust	1	
	25	90387-15658	COLLAR	1	
	26	2K6-25388-00	PULLER, chain	2	
	27	95301-08700	NUT, hexagon	2	
	28	90101-08034	BOLT, hexagon (168-25379-00)	2	
	29	90381-15029	BUSHING, solid	1	
	30	2K6-25381-00	SHAFT, wheel	1	
	31	91401-30030	PIN, cotter	1	
	32	2X3-25371-00	BAR, tension	1	
	33	93104-11056	OIL SEAL	4	

Fig. 24 REAR WHEEL



Ref.No.	Part No.	Description	Q'ty	Remarks
24-34	90102-08034	BOLT, pin hole hexagon	1	
35	91401-20015	PIN, split	1	
36	90387-08699	COLLAR	1	
37	95611-08100	NUT, U	1	
38	1W1-25449-00	GEAR, sprocket wheel (49T)	} U.R.	STD
	1W1-25451-00	GEAR, sprocket wheel (51T)		
	1W1-25453-00	GEAR, sprocket wheel (53T)		
	2X3-25455-00	GEAR, sprocket wheel (55T)		
39	1G8-25412-00	WASHER, special	3	
40	90116-10221	BOLT, stud	6	
41	90170-10219	NUT, hexagon	6	
42	93306-30203	BEARING (B6202Z)	1	
43	93106-26005	OIL SEAL (DD-26-42-8)	1	
44	431-25367-00	COVER, dust	1	
45	90387-15659	COLLAR	1	
46	90171-14020	NUT, castle	1	
47	94580-11102	CHAIN (D1D520TR-102L)	1	
48	94680-11001	JOINT, chain	1	

Fig. 25 ELECTRICAL



Ref.No.	Part No.	Description	Q'ty	Remarks
25- 1	2X6-82310-10	IGNITION COIL ASS'Y	1	
2	92501-06025	SCREW, panhead	2	
3	92901-06100	WASHER, spring	2	
4	294-82370-00	PLUG CAP ASS'Y	1	
	808-82370-10	PLUG CAP ASS'Y (with Noise Suppressor)	1	for S. Africa
5	2X3-82590-00	WIRE HARNESS ASS'Y	1	
6	2X6-85540-11	C.D.I. UNIT ASS'Y	1	
7	2K7-85547-00	DAMPER	1	
8	288-21376-00	BAND	1	
9	90462-05005	CLAMP (363-15485-01)	1	

REPAIR KIT

Fig. 26 REPAIR KIT

Ref.No.	Part No.	Description	Q'ty	Remarks	Ref.No.	Part No.	Description	Q'ty	Remarks
26- 1	2X3-11630-01	PISTON ASS'Y (STD)	1		26-21	93210-18023	. O-RING (1.2-17.6)	1	Ref. No. 3-17
	2X3-11630-11	PISTON ASS'Y (1st O.S)	1		22	90430-08069	. GASKET (452-16387-00)	1	4-24
	2X3-11630-21	PISTON ASS'Y (2nd O.S)	1		23	311-13621-01	. PACKING, valve seat	1	9-27
	2X3-11630-31	PISTON ASS'Y (3rd O.S)	1		24	483-14184-00	. GASKET, float chamber	1	10-12
	2X3-11630-41	PISTON ASS'Y (4th O.S)	1		25	1W1-W0003-00	OIL SEAL KIT	1s	
2	2X3-11631-01-97	. PISTON (55.97mm STD)	1	} U.R. 1 } Ref. No. 3-8	26	93102-25144	. OIL SEAL (SD-25-40-8)	1	3-14
	2X3-11631-01-98	. PISTON (55.98mm STD)	1		27	93103-28100	. OIL SEAL (SW-28-40-8)	1	3-16
	2X3-11635-01	. PISTON (56.25mm 1st O.S)	1		28	93104-14004	. OIL SEAL (SO-14-25-5)	1	4-22
	2X3-11636-01	. PISTON (56.50mm 2nd O.S)	1		29	93102-26042	. OIL SEAL (SD-26-38-5)	1	5-29
	2X3-11637-01	. PISTON (56.75mm 3rd O.S)	1		30	93101-12060	. OIL SEAL (S-12-21-4)	1	7-4
	2X3-11638-01	. PISTON (57.00mm 4th O.S)	1		31	93101-17062	. OIL SEAL (S-17-25-4)	1	8-16
3	2X3-11601-00	. PISTON RING SET (STD)	1s	} 3-9					
	2X3-11601-10	. PISTON RING SET (1st O.S)	1s						
	2X3-11601-20	. PISTON RING SET (2nd O.S)	1s						
	2X3-11601-30	. PISTON RING SET (3rd O.S)	1s						
	2X3-11601-40	. PISTON RING SET (4th O.S)	1s						
4	137-11633-00	. PIN, piston	1	3-11					
5	93450-17025	. CIRCLIP	2	3-12					
6	2K5-11650-00	CONNECTING ROD ASS'Y	1						
7	1G8-11651-00	. ROD, connecting	1	3-4					
8	2K5-11681-00	. PIN, crank	1	3-5					
9	93310-422G3	. BEARING, con-rod big end	1	3-6					
10	90209-22071	. WASHER (164-11685-00)	2	3-7					
11	93310-216A3	. BEARING, con-rod small end	1	3-10					
12	2X3-W0001-00	GASKET KIT	1s						
13	90430-12038	. GASKET (132-15353-00)	1	1-9					
14	1W1-11351-00	. GASKET, cylinder	1	1-18					
15	2X3-11181-00	. GASKET, cylinder head	1	1-20					
16	93210-11073	. O-RING (2.4-10.8)	2	1-29					
17	2W5-15455-00	. GASKET, crankcase cover left	1	2-3					
18	1W1-15451-00	. GASKET, crankcase cover right	1	2-6					
19	93210-14104	. O-RING (2.4-13.8)	1	2-10					
20	90430-06016	. GASKET (838-15348-00)	1	2-12					

NUMERICAL INDEX

NUMERICAL INDEX

Part No.	Ref.No.	Part No.	Ref.No.	Part No.	Ref.No.	Part No.	Ref.No.	Part No.	Ref.No.	Part No.	Ref.No.
1A0-24512-00	21-23	1W1-161500-01	4-2	1W1-23173-L0	18-9	137-11633-00	3-11	2K6-83922-00	20-12	2W6-27421-00	16-10
1A0-24524-01	21-24	1W1-16301-01	4-1	1W1-23185-L0	18-20	137-14134-00	10-39	2K7-2148A-00	13-23	2W6-27422-00	16-6
1A0-24529-01	21-22	1W1-16351-00	4-7	1W1-23317-01	18-26	137-14143-62	10-3	2K7-28100-10	13-16	2X3-W0001-00	26-12
1E6-23441-00	19-10	1W1-16356-00	4-13		19-13	137-14143-64	10-3	2K7-85547-00	25-7	2X3-11111-00	1-21
1G8-11651-00	3-4	1W1-16358-00	4-10	1W1-23318-L0	18-32	137-14143-66	10-3	2K7-85555-00	13-18	2X3-11181-00	1-20
1G8-15362-00	2-9	1W1-17121-00	5-7	1W1-23389-00	18-27	137-16325-70	4-6	2K8-26311-01	20-24	2X3-11311-00	1-19
1G8-16371-00	4-4	1W1-17211-01	5-21		19-12	137-17417-00-05	5-26	2N4-15371-00	1-25	2X3-11601-00	3-9
1G8-17461-10	5-31	1W1-17411-00	5-1	1W1-23416-00	19-3	137-25159-00	23-21	2W5-11400-00	3-1	2X3-11601-10	3-9
1G8-17461-30	5-31	1W1-17421-00	5-12	1W1-23435-01-98	19-5	146-25116-00	23-13	2W5-11412-00	3-2	2X3-11601-20	3-9
1G8-23144-L1	18-6	1W1-17461-20	5-31	1W1-24144-01	21-8	148-25115-00	24-12	2W5-15111-00	1-1	2X3-11601-30	3-9
1G8-25412-00	24-39	1W1-17471-01	5-10	1W1-24173-00	21-15	156-26347-00	20-32	2W5-15381-00	6-21	2X3-11601-40	3-9
1J4-83976-00	20-3	1W1-18101-02	7-5	1W1-24181-00	13-20	164-14137-00	10-22	2W5-15411-00	2-1	2X3-11630-01	26-1
1K7-25111-10-98	23-1	1W1-18140-00	6-13	1W1-24182-01	21-7	193-14142-60	10-2	2W5-15421-00	2-2	2X3-11630-11	26-1
1M1-14169-00	10-34	1W1-18177-00	6-14	1W1-24183-00	13-21	2A6-18120-01	7-8	2W5-15455-00	2-3	2X3-11630-21	26-1
1M1-21621-00	17-15	1W1-18185-00	6-3	1W1-24192-00	21-12	2A6-25351-01	24-19	2W5-17131-00	5-5	2X3-11630-31	26-1
1T1-25194-00	23-11	1W1-18197-01	7-10	1W1-24611-00	21-4	1K5-11650-00	26-6	2W5-17151-00	5-2	2X3-11630-41	26-1
1W1-W0003-00	26-25	1W1-18531-00	6-7	1W1-24612-00	21-5	2K5-11681-00	3-5	2W5-17161-00	5-6	2X3-11631-01-97	3-8
1W1-11351-00	1-18	1W1-18535-00	6-8	1W1-24738-00	22-8	2K5-24500-00	21-20	2W5-17221-00	5-13	2X3-11631-01-98	3-8
1W1-11422-01	3-3	1W1-18561-00	6-5	1M1-24748-00	22-7	2K5-26335-00	20-28	2W5-17241-00	5-18	2X3-11635-01	3-8
1W1-13565-00	9-21	1W1-21511-00	17-1	1W1-25121-01-98	23-17	2K6-14115-00	10-14	2W5-17251-00	5-20	2X3-11636-01	3-8
1W1-14171-00	10-42	1W1-21511-10	17-1	1W1-25181-00	23-24	2K6-14147-00	10-15	2W5-17261-00	5-16	2X3-11637-01	3-8
1W1-14175-01	10-44	1W1-22128-00	14-34	1W1-25449-00	24-38	2K6-14181-16	10-13	2W5-18541-00	6-1	2X3-11638-01	3-8
1W1-14968-00	10-41	1W1-22141-00	14-2	1W1-25451-00	24-38	2K6-21611-00	17-7	2W6-17231-01	5-19	2X3-13610-00	9-22
1W1-15121-01	1-2	1W1-22216-00	15-12	1W1-25453-00	24-38	2K6-21611-10	17-7	2W6-18511-00	6-9	2X3-13613-00	9-23
1W1-15381-00	5-34	1W1-22226-00	15-18	1W1-26249-00	20-22	2K6-22128-00	14-3	2W6-18512-00	6-10	2X3-14101-00	10-1
1W1-15431-00	2-5	1W1-22497-00	15-10	1W1-26341-01	20-30	2K6-22178-00	13-24	2W6-18513-00	6-11	2X3-14123-00	10-40
1W1-15451-00	2-6	1W1-23111-L0	18-16	1W1-28135-00	13-17	2K6-22213-00	15-7	2W6-22151-00	14-12	2X3-14411-00	9-1
1W1-15611-02-33	8-1	1W1-23114-L0	18-15	102-18137-00-10	7-12	2K6-22214-00	15-6	2W6-25104-00	23-2	2X3-14412-00	9-8
1W1-15618-01	8-17	1W1-23118-L0	18-40	109-81328-11	12-10	2K6-24770-90	22-1	2W6-25179-90	23-5	2X3-14450-00	9-3
1W1-15621-01	8-2	1W1-23142-L0	18-14	122-23119-01	18-31	2K6-24771-00	22-2	2W6-25189-90	23-6	2X3-14452-00	9-30
1W1-15641-00	8-10	1W1-23145-L0	18-4	122-23129-001	18-30	2K6-25381-00	24-30	2W6-25196-90	23-3	2X3-14453-00	9-18
1W1-15660-00	8-8	1W1-23148-L0	18-7	127-14161-00	10-33	2K6-25388-00	24-26	2W6-25197-90	23-4	2X3-14462-00	9-2
1W1-15666-00	8-15	1W1-23156-L0	18-5	127-14186-00	10-11	2K6-27311-00	16-1	2W6-27411-00	16-9	2X3-14477-00	9-6
1W1-16111-00	3-19	1W1-23168-L0	18-8	132-18113-01	7-2	2K6-83912-00	20-5	2W6-27412-00	16-5	2X3-14610-00	11-1

NUMERICAL INDEX

Part No.	Ref.No.	Part No.	Ref.No.	Part No.	Ref.No.	Part No.	Ref.No.	Part No.	Ref.No.	Part No.	Ref.No.
2X3-14753-00	11- 3	2X3-24245-30	21- 3	2X6-85567-10	12- 5	363-14131-00	10-27	537-16321-00	4- 5	90109-08480	14-37
2X3-16357-00	4-18	2X3-25311-00-98	24- 1	2X7-23340-00-33	18-21	363-14137-00	10-29	537-25304-00	24- 2	90109-10473	16- 2
2X3-16380-00	4-19	2X3-25321-00-98	24-18	2Y5-14412-00	9- 8	382-26372-01	20-29	537-25391-90	24- 5	90116-08262	1-17
2X3-18111-00-33	7- 1	2X3-25327-00	24-24	204-14122-00	10-35		20-31	537-25392-90	24- 6	90116-10221	24-40
2X3-21110-00-33	13- 1	2X3-25355-00	24-20	214-24512-00	21-21	401-15317-00	20-28	573-25394-00	24-11	90116-10278	1-11
2X3-21274-00	17-22	2X3-25371-00	24-32	239-14116-22	10-21	401-15676-00	8-13	537-25396-90	24- 3	90116-10279	1-12
2X3-21410-00	13- 2	2X3-25455-00	24-38	239-14141-48	10-19	401-18178-00	7- 7	537-25397-90	24- 4	90123-08013	20-26
2X3-21629-00	17-14	2X3-27211-00-33	16-14	239-14172-20	10- 4	431-24181-00	13-12	565-14747-00	11-12	90123-08046	20-27
2X3-21711-00-98	13- 9	2X3-27231-00	16-18	239-14190-33	10- 6	431-25367-00	24-44	565-21746-00	17-16	90149-06011	21-26
2X3-21711-10-98	13- 9	2X3-82590-00	25- 5	239-14195-00	10- 7	437-25330-00	24-16	583-14918-00	10-48	90149-08108	4-23
2X3-21721-00-98	13-10	2X4-14468-00	9- 4	240-22127-00	14-11	437-83936-00	20-37	583-26241-00	20- 2	90149-08111	7-14
2X3-21721-10-98	13-10	2X4-22147-00	14-29	248-15654-00	8-11	437-83936-10	20-36	583-26242-00	20-21	90159-05011	4- 9
2X3-21737-00	9-16	2X4-22153-00	14-15	248-25317-00	24-13	461-82911-00	20- 4	619-24535-00	21-25	90170-08029	7-15
	13-11	2X4-22179-00	14-19	256-14135-00	10-43	483-14146-00	10- 8	737-14137-00	10-49	90170-10219	24-41
2X3-22110-00-35	14- 1	2X4-22199-00	14-20	275-14178-00	10-45	483-14184-00	10-12	802-14161-00	10-36	90170-14171	4-14
2X3-22210-00	15- 1	2X4-22219-00	15-11	278-23181-50	18-29	483-14781-00	11- 5	802-14173-00	10-47	90170-16111	14-14
2X3-22223-00	15-14	2X4-22221-00	15- 5	288-21376-00	25- 8	493-14196-00	10-51	802-14174-00	10-46	90170-20213	15- 8
2X3-22401-00	15-17	2X4-22224-00	15-13	294-82370-00	25- 4	500-14155-00	10-32	808-82370-10	25- 4	90171-14020	23-27
2X3-23101-L0	18- 1	2X4-22228-00	15- 4	304-15128-00	1-15	500-14158-00	10-30	812-11175-00	1-22		24-46
2X3-23110-L0	18-10	2X4-22472-00	15-16	310-14185-00	10- 9	509-14112-30	10-20	812-14147-00	10-37	90175-06012	9- 5
2X3-23126-L0	18- 2	2X4-22489-00	15-15	310-14187-00	10-10	509-14136-00	10-26	812-14235-00	10-38	90175-06013	16-24
2X3-23136-L0	18- 3	2X4-22493-00	15- 3	310-14197-00	10-50	509-14198-00	10-31	90101-06278	24-21	90179-08148	20-25
2X3-23141-L0	18-13	2X4-23485-00	18-37	311-13616-01	9-24	509-14274-00	10-23	90101-06291	23-23	90179-08243	14-38
2X3-23141-10	18-13	2X4-23489-00	18-38	311-13621-01	9-27	509-23158-L0	18-28	90101-06304	22- 9	90179-10204	1-13
2X3-23141-20	18-13	2X4-24183-00	13-22	313-14146-00	10-18	509-23163-L0	18-17	90101-08034	24-28	90179-10257	3-24
2X3-23152-00	18-12	2X4-26111-00	20- 1	322-25118-00	23-25	509-23184-L0	18-19	90101-08428	16-12	90179-12244	3-22
2X3-23170-L0	18-11	2X4-2811A-00	13-19	322-25130-00	23-18	509-23190-L0	18-18	90102-08034	24-34	90179-16226	5-33
2X3-23191-L0	18-34	2X6-82310-10	15- 1	322-25151-00	23-20	509-23194-L0	18-36	90105-08099	13- 3	90179-25033	19- 4
2X3-23191-M0	18-34	2X6-85500-11	12- 1	322-25155-00	23-22	509-23489-L0	18-33	90105-08100	13- 4	90185-08054	13- 7
2X3-24110-00	21- 1	2X6-85510-10	12- 3	322-26243-00	20-23	509-24724-00	22-10	90105-10037	13- 5	90201-06067	13-14
2X3-24110-10	21- 1	2X6-85515-10	12- 9	322-26281-00	20-18	516-82921-30	20-11	90105-14060	19- 6		17- 4
2X3-24244-20	21- 2	2X6-85540-11	25- 6	322-26282-00	20-19	525-15651-00	5-25	90109-06410	20- 8		17-13
2X3-24244-30	21- 2	2X6-85550-10	12- 2	328-15316-00	1-27	537-14153-00	10- 5		20-15		17-19
2X3-24245-20	21- 3	2X6-85566-10	12- 4	341-92090-60	18-35	537-14788-00	11- 4	90109-08397	18-22	90201-06407	21-18

NUMERICAL INDEX

Part No.	Ref.No.	Part No.	Ref.No.	Part No.	Ref.No.	Part No.	Ref.No.	Part No.	Ref.No.	Part No.	Ref.No.
90201-08083	20- 7	90340-12005	1-10	90501-10245	16-22	91810-16016	1-14	92901-06100	21-14	93106-26005	24-43
	20-14	90380-12051	15-19	90501-10459	8- 5	91810-19020	1- 3		21-17	93108-35004	14- 4
	20-34	90380-16056	14- 8	90501-20361	4- 8	91901-06012	13-13		25- 3	93109-22018	14-10
90201-08113	11-14	90380-16063	14- 7	90501-98477	15- 2	91830-21014	1- 4	92901-06200	4-11	93210-11073	1-29
90201-08544	18-25	90381-15029	24-29	90501-98478	15- 2		2- 7		16-20	93210-14104	2-10
90201-10639	16- 8	90386-22097	14- 9	90501-98540	15- 2	92501-06020	9-10		22- 5	93210-18023	3-17
90201-12164	6-19	90387-07391	9-13	90506-08155	7- 9		12-14	92901-06600	9- 9	93210-29282	24-23
90201-12541	8- 3		17- 6	90506-09156	6-15		14-24		9-29	93210-40289	10-28
90201-13202	13-25	90387-07393	21-19	90506-16036	23-19	92501-06025	9-11		12-16	93306-20107	6-20
90201-14217	4-21	90387-08258	11-13		24-17		25- 2		14-26	93306-20203	23-16
90201-15701	5-22	90387-08699	24-36	90506-20193	16-15	92501-08010	1-16		21-11		24-14
90201-17550	4- 3	90387-15600	23-26	90507-20030	11- 2	92506-06008	2-11	92901-08100	11-10	93306-20205	23-14
	4-17	90387-15658	24-25	90507-29008	16- 4	92701-06012	5-35		11-15	93306-20529	3-13
90201-20266	5- 3	90387-15659	24-45	90508-20023	16-11		6-22		14-17	93306-30203	24-42
90201-22555	5-14	90387-15714	24-15	90508-20345	4-20	92901-03100	9-25		14-22	93306-30304	5- 9
90201-22680	14- 5	90387-20488	3-18	90508-26346	8-14		10-25		18-24	93306-30406	3-15
90202-06010	21-27	90387-20503	5-30	90508-32349	7-11	92901-04100	12-12	92901-08200	13- 6	93306-30411	5-28
90204-12007	3-21	90430-06016	2-12	90560-15116	23-12	92901-04600	12-13		13-27	933102-216A3	3-10
90209-18135	5-17	90430-08069	4-24	90560-17147	4-16	92901-05100	10-17	92901-08600	11-11	93310-422G3	3- 6
90209-22071	3- 7	90430-12038	1- 9	90901-06600	11- 8		12- 7		13-28	93311-32515	5-24
90215-08014	7-16	90445-07340	1-26	91316-06030	2- 4		14-31		14-18	93311-41530	5- 8
90215-14144	4-15	90445-09117	21- 6		2- 8	92901-05200	14-32		14-23	93315-21813	6- 2
90215-16127	5-32	90445-11152	21-28	91316-06050	1- 5	92901-05600	12- 8	92901-10100	13- 8	93317-22214	14- 6
90240-06040	16-19	90446-09158	18-39	91316-06060	1- 6		17-21	92901-12600	14-35	93332-00001	19- 2
90240-08012	20-33	90460-19058	9-20	91316-06070	1- 7	92901-06010	20-16		16-16	93332-00008	19- 1
90240-12060	14-33	90460-64065	9-19	91316-06075	1- 8	92901-06100	9-12	92901-16100	14-13	93410-11002	6-18
90249-12008	16-23	90460-85135	9-17	91316-08025	8- 7		11- 7	93101-12060	7- 4	93410-20038	5- 4
90250-06013	6-12	90462-05005	25- 9	91401-20012	16-21		12-15	93101-17062	8-16	93410-22039	5-15
90280-03017	3-23	90462-06009	1-30		20-35		14-25	93102-20009	23-15	93410-30012	8-12
90282-05005	3-20	90467-10008	21-29	91401-20015	14-39		17- 3	93102-25144	3-14	93430-08006	6- 6
90336-06030	8-18	90468-26048	8- 9		24-35		17-10	93102-26042	5-29	93430-08007	8- 4
90338-06018	17-23	90480-14100	9-15	91401-30022	14-36		17-18	93103-28100	3-16	93430-09019	16-17
90338-23090	6-17	90480-14102	9-14	91401-30030	23-28		20- 9	93104-11056	24-33	93430-10016	7- 6
90339-13005	13-15	90480-14198	17- 5		24-31		21-10	93104-14004	4-22		7-13

NUMERICAL INDEX

Part No.	Ref.No.	Part No.	Ref.No.	Part No.	Ref.No.	Part No.	Ref.No.	Part No.	Ref.No.	Part No.	Ref.No.
93440-15012	5-23	95701-08100	19- 9	98502-05030	12- 6						
	5-27	95821-08035	19-11	98503-05015	20-20						
93450-17025	3-12	95821-08040	19- 7	98512-03008	9-26						
93503-16010	4-25	95821-08055	19- 8								
	8- 6	97301-05010	14-30								
93604-12037	6- 4	97301-06012	21- 9								
93604-26132	15- 9		21-13								
93604-30018	6-16	97301-06014	14- 8								
94130-21520	23- 8		17-17								
94141-18519	24- 8	97301-06016	11- 6								
94230-21126	23- 9		17- 9								
94235-18022	24- 9		22- 4								
94325-18043	24-10	97301-06020	16-25								
94330-21088	23-10	97301-06022	20- 6								
94416-21104	23- 7		20-13								
94418-18141	24- 7	97301-06025	9-28								
94580-11102	24-47		17- 2								
94680-11001	24-48	97301-06035	22- 3								
95301-06600	4-12	97301-06050	14-27								
	24-22	97301-08016	14-21								
95301-06700	16-26	97301-08020	11- 9								
	17-12	97301-08030	11-16								
95301-08600	1-23	97301-08035	14-16								
95301-08700	24-27	97301-08050	13-26								
95301-10700	16- 3	97311-10016	16- 7								
95311-08600	18-23	97321-06012	5-11								
95601-06100	14-28	97321-06020	7- 3								
	17-11	97321-06035	21-16								
	20-10	97701-40516	9- 7								
	20-17	97701-50120	17-20								
	22- 6	98501-03008	10-24								
95601-08100	13-29	98501-04005	15-20								
	16-13	98501-04008	12-11								
95611-08100	24-37	98501-05016	10-16								

